

RESOLUTION NO. 92-155

RESOLUTION OF THE COUNCIL OF THE CITY OF ROSEVILLE AMENDING
RESOLUTION NO. 89-26 TO CREATE AN ADDITIONAL
ASSESSMENT ZONE WITHIN THE JOHNSON RANCH LANDSCAPING
AND LIGHTING DISTRICT

WHEREAS, by Resolution No. 89-26 adopted February 15, 1989 (the "Resolution of Formation"), the City Council ordered the formation of the Johnson Ranch Landscaping and Lighting District ("JR LLD") to levy and collect assessments for certain improvements and maintenance pursuant to the Landscaping and Lighting Act of 1972; and

WHEREAS, as formed the JR LLD had three zones designated Zones A, B and C; and

WHEREAS, Southfork Partnership, the owner of parcels 42, 43, 44, 45, 46 and 55 as designated in the Southeast Roseville Specific Plan ("SERSP"), has requested the creation of a fourth JR LLD zone to include only those parcels and to be designated Zone D, for the purpose of levying and collecting an annual assessment of the mitigation monitoring and maintenance costs arising out of compliance with the Section 404 Nationwide 26 Permit Authorization for the Johnson Ranch East Project, Regulatory Section No. 9101137, dated January 8, 1992 and February 20, 1992, as issued by the U.S Army Corps of Engineers for the parcels comprising Zone D (the "Zone D -- 404 Permit").

NOW, THEREFORE, BE IT RESOLVED by the Council of the City of Roseville that the Johnson Ranch Landscaping and Lighting District Resolution of Formation (Resolution No. 89-26) is hereby amended as follows:

1. Section 2 of the Resolution of Formulation is superseded hereby and amended to read as follows:

Section 2. The district shall be known and is hereby designated as the "Johnson Ranch Landscaping and Lighting District" (the "District"). The District shall have four zones which shall be known as and are hereby designated as Zones A, B, C and D (the "Zones"). The territory to be contained within the District and the Zones shall be as follows:

Zone A: that property designated as Parcels 8A, 8B, 24, 27, 28, 29 and 32 on the schematic development plan for the Southeast Roseville Specific Plan, as more particularly described on Exhibit A attached hereto and incorporated herein.

Zone B: that property designated as Parcels 41 and 46, inclusive, and 55 on the schematic development plan for the Southeast Roseville Specific Plan, as more

particularly described on Exhibit A, attached hereto and incorporated herein.

Zone C: that property designated as Parcels 7E, 8A, 8B, 21, 29 and 30 on the schematic development plan for the Southeast Roseville Specific Plan, as more particularly described on Exhibit A, attached hereto and incorporated herein.

Zone D: that property designated as Parcels 42 and 46, inclusive, and 55 on the schematic development plan for the Southeast Roseville Specific Plan, as more particularly described on Exhibit A, attached hereto and incorporated herein.

The boundaries of the District, and the properties within each zone, are more particularly described on Exhibit A attached hereto and by this reference incorporated herein.

2. Section 4 of the Resolution of Formation is superseded hereby and amended to read as follows:

Section 4. The improvements to be maintained by each zone within the District and the allocation of the costs of such maintenance between the City and the properties within each Zone shall be as follows:

Zone A: Zone A shall maintain the property designated as parcels 71, 73 and 73B on the schematic development plan for the Southeast Roseville Specific Plan and improvements thereon. In accordance with section 3.C.7 of the Development Agreement, the City shall pay not less than thirty percent (30%) of the cost of such maintenance. The remaining cost of such maintenance shall be assessed upon the properties within Zone A.

Zone B: Zone shall maintain the property designated as Parcels 74 and 75 on the schematic development plan for the Southeast Roseville Specific Plan and the improvements thereon, except that Zone B assessments shall not include the costs arising out of compliance with the Zone D -- 404 Permit. In accordance with section 3.C.7 of the Development Agreement, the City shall pay not less than thirty percent (30%) of the cost of such maintenance. The remaining cost of such maintenance shall be assessed upon the properties within Zone B.

Zone C: Zone C shall maintain the property, designated as parcels 70 and 72 on the schematic development plan for the Southeast Roseville Specific Plan and improvements thereon. In accordance with section 3.C.7 of the Development Agreement, the cost of such maintenance shall be assessed in full upon the

Res 92-155
PS 2

particularly described on Exhibit A, attached hereto and incorporated herein.

Zone C: that property designated as Parcels 7E, 8A, 8B, 21, 29 and 30 on the schematic development plan for the Southeast Roseville Specific Plan, as more particularly described on Exhibit A, attached hereto and incorporated herein.

Zone D: that property designated as Parcels 42 and 46, inclusive, and 55 on the schematic development plan for the Southeast Roseville Specific Plan, as more particularly described on Exhibit A, attached hereto and incorporated herein.

The boundaries of the District, and the properties within each zone, are more particularly described on Exhibit A attached hereto and by this reference incorporated herein.

2. Section 4 of the Resolution of Formation is superseded hereby and amended to read as follows:

Section 4. The improvements to be maintained by each zone within the District and the allocation of the costs of such maintenance between the City and the properties within each Zone shall be as follows:

Zone A: Zone A shall maintain the property designated as parcels 71, 73 and 73B on the schematic development plan for the Southeast Roseville Specific Plan and improvements thereon. In accordance with section 3.C.7 of the Development Agreement, the City shall pay not less than thirty percent (30%) of the cost of such maintenance. The remaining cost of such maintenance shall be assessed upon the properties within Zone A.

Zone B: Zone shall maintain the property designated as Parcels 74 and 75 on the schematic development plan for the Southeast Roseville Specific Plan and the improvements thereon, except that Zone B assessments shall not include the costs arising out of compliance with the Zone D -- 404 Permit. In accordance with section 3.C.7 of the Development Agreement, the City shall pay not less than thirty percent (30%) of the cost of such maintenance. The remaining cost of such maintenance shall be assessed upon the properties within Zone B.

Zone C: Zone C shall maintain the property, designated as parcels 70 and 72 on the schematic development plan for the Southeast Roseville Specific Plan and improvements thereon. In accordance with section 3.C.7 of the Development Agreement, the cost of such maintenance shall be assessed in full upon the

properties within Zone C so long as parcels 700 and 72 are not open to the general public.

Zone D: The parcels comprising Zone D shall be assessed the mitigation monitoring and maintenance costs arising out of compliance with the Zone D -- 404 Permit.

3. The assessment formula for Zone D shall be calculated in accordance with the same methodology used in calculating the assessment formulas for Zones A, B and C.

4. All provisions of the Resolution of Formation not otherwise inconsistent with this Resolution, are and shall remain in full force and effect. Such provisions are reenacted, adopted, approved and ratified herewith as if fully set forth herein.

PASSED AND ADOPTED THIS 3rd day of June, 1992, by the following roll call vote:

AYES: Councilmembers: Pauline Roccucci, Fred M. Jackson, Harry Crabb, Jr.,
Mel Hamel, Bill Santucci
NOES: Councilmembers: None
ABSENT: Councilmembers: None
ABSTAIN: Councilmembers: None

Bill Santucci
Mayor

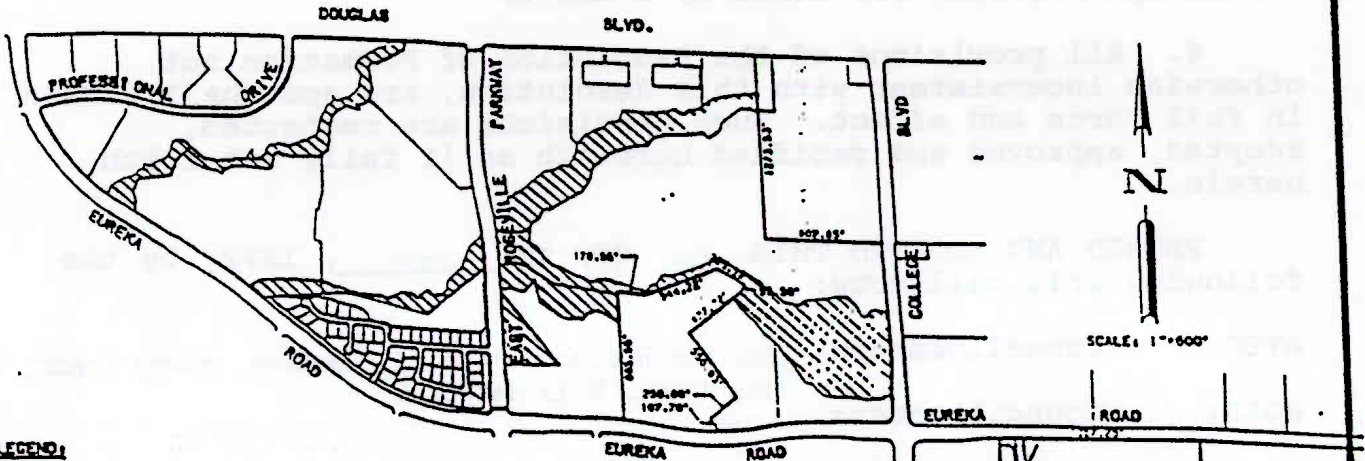
ATTEST:

Helene Florence
City Clerk

**PROPOSED BOUNDARIES OF
JOHNSON RANCH
LANDSCAPING AND LIGHTING DISTRICT
ASSESSMENT YEAR 1992-1993
CITY OF ROSEVILLE, CALIFORNIA**

MAY, 1992
MORTON & PITALO, INC.
SHEET 1 OF 1 SHEET

BOOK _____ OF ASSESSMENT DISTRICTS, PAGE _____



LEGEND:

-NOT A PART OF THIS ASSESSMENT DISTRICT
-ASSESSMENT DISTRICT BOUNDARY

CLERK'S MAP FILING STATEMENT

FILED IN THE OFFICE OF THE CITY CLERK OF THE CITY OF ROSEVILLE, STATE OF CALIFORNIA, THIS _____ DAY OF _____ 19____

CITY CLERK, CITY OF ROSEVILLE

CLERK'S MAP STATEMENT

I HEREBY STATE THAT THE WITHIN MAP SHOWING PROPOSED BOUNDARIES OF JOHNSON RANCH LANDSCAPING AND LIGHTING DISTRICT, CITY OF ROSEVILLE, PLACER COUNTY, CALIFORNIA, WAS APPROVED BY THE CITY COUNCIL OF THE CITY OF ROSEVILLE AT A REGULAR MEETING THEREOF, HELD ON _____ DAY OF _____ 19____ BY ITS RESOLUTION NO. _____

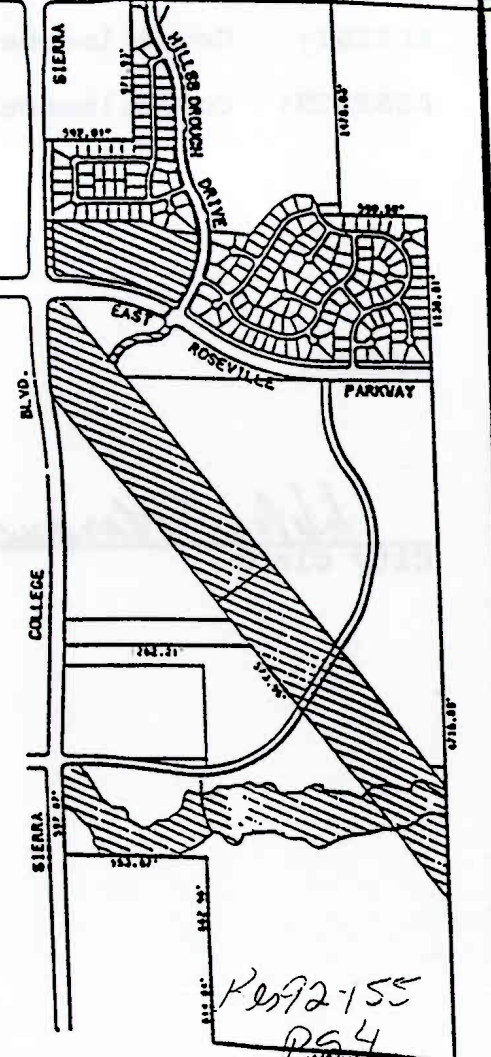
CITY CLERK, CITY OF ROSEVILLE
COUNTY OF PLACER

COUNTY RECORDER'S FILING STATEMENT

FILED THIS _____ DAY OF _____ 19____, AT THE HOUR OF _____ O'CLOCK _____ IN THE OFFICE OF THE COUNTY RECORDER IN THE COUNTY OF PLACER, STATE OF CALIFORNIA.

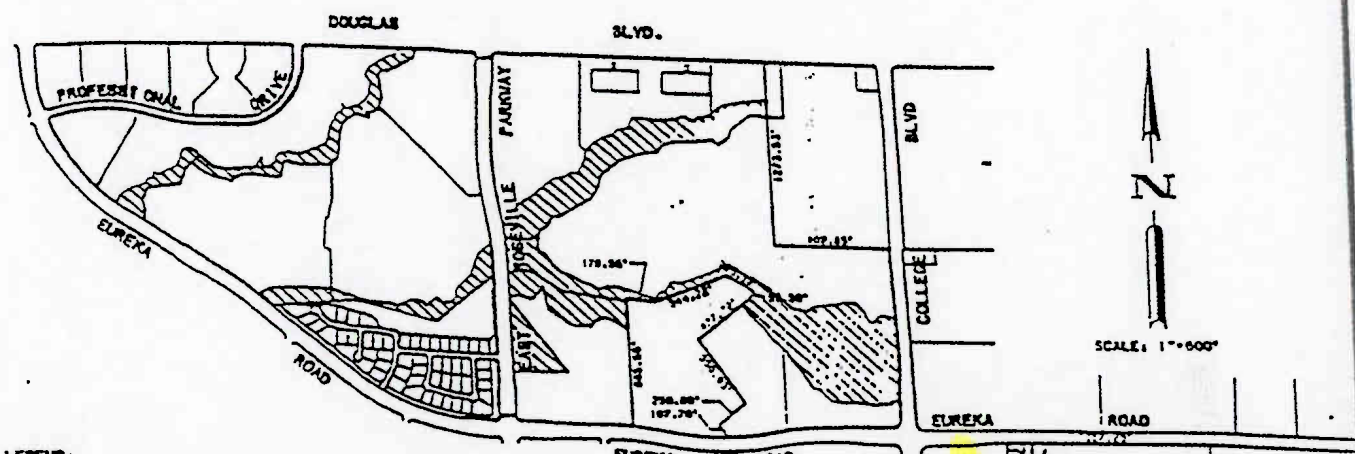
FILED _____ COUNTY RECORDER
COUNTY OF PLACER, CALIFORNIA

FEE: _____ BY: _____ DEPUTY



BOOK — OF ASSESSMENT DISTRICTS, PAGE —

PROPOSED BOUNDARIES OF
JOHNSON RANCH
LANDSCAPING AND LIGHTING DISTRICT
ASSESSMENT YEAR 1992-1993
CITY OF ROSEVILLE, CALIFORNIA
MAY, 1992
MORTON & PITALO, INC.
SHEET 1 OF 1 SHEET



LEGEND:
[Hatched Area]NOT A PART OF THIS ASSESSMENT DISTRICT
[Solid Line]ASSESSMENT DISTRICT BOUNDARY

CLERK'S MAP FILING STATEMENT

FILED IN THE OFFICE OF THE CITY CLERK OF THE CITY OF ROSEVILLE, STATE OF CALIFORNIA, THIS ___ DAY OF ___ 19__

CITY CLERK, CITY OF ROSEVILLE

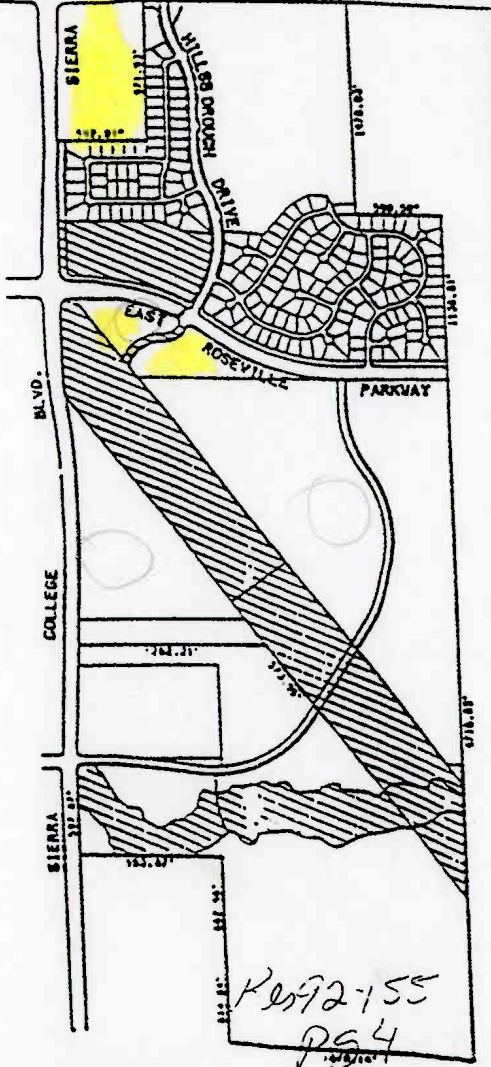
CLERK'S MAP STATEMENT

I HEREBY STATE THAT THE WITHIN MAP SHOWING PROPOSED BOUNDARIES OF JOHNSON RANCH LANDSCAPING AND LIGHTING DISTRICT, CITY OF ROSEVILLE, PLACER COUNTY, CALIFORNIA, WAS APPROVED BY THE CITY COUNCIL OF THE CITY OF ROSEVILLE AT A REGULAR MEETING THEREOF, HELD ON ___ DAY OF ___ 19__, BY ITS RESOLUTION NO. ____

CITY CLERK, CITY OF ROSEVILLE
COUNTY OF PLACER

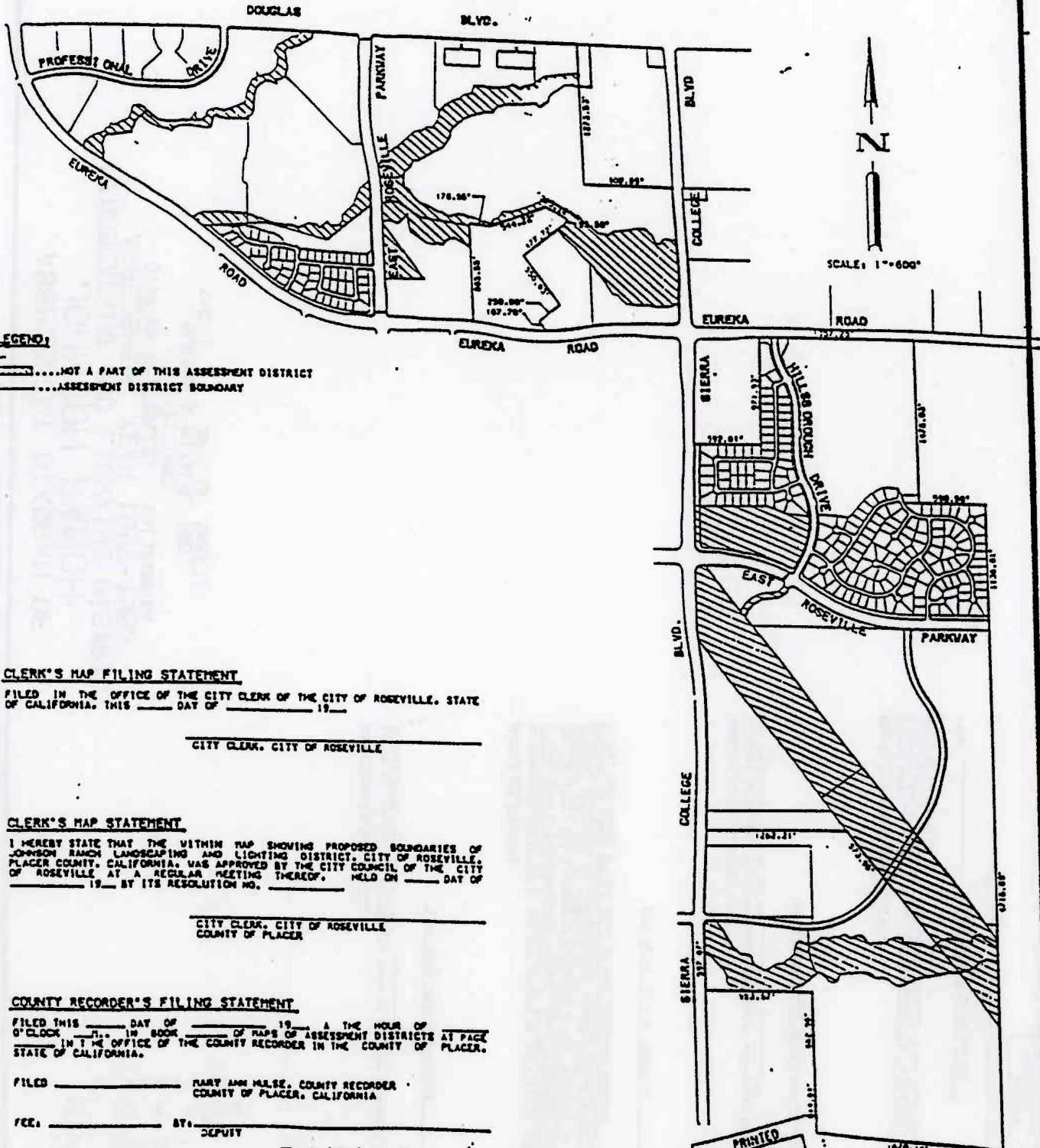
COUNTY RECORDER'S FILING STATEMENT

FILED THIS ___ DAY OF ___ 19__ AT THE HOUR OF ___ O'CLOCK ___ IN BOOK ___ OF MAPS OF ASSESSMENT DISTRICTS AT PAGE ___ IN THE OFFICE OF THE COUNTY RECORDER IN THE COUNTY OF PLACER, STATE OF CALIFORNIA.
FILED _____ MARY ANN MURSE, COUNTY RECORDER
COUNTY OF PLACER, CALIFORNIA
FEE: _____ BY: _____ DEPUTY



1992-155
pg 4

**PROPOSED BOUNDARIES OF
JOHNSON RANCH
LANDSCAPING AND LIGHTING DISTRICT
ASSESSMENT YEAR 1992-1993
CITY OF ROSEVILLE, CALIFORNIA
MAY, 1992
MORTON & PITALO, INC.
SHEET 1 OF 1 SHEET**



LEGEND:

-NOT A PART OF THIS ASSESSMENT DISTRICT
-ASSESSMENT DISTRICT BOUNDARY

CLERK'S MAP FILING STATEMENT

FILED IN THE OFFICE OF THE CITY CLERK OF THE CITY OF ROSEVILLE, STATE OF CALIFORNIA, THIS _____ DAY OF _____ 19____

CITY CLERK, CITY OF ROSEVILLE

CLERK'S MAP STATEMENT

I HEREBY STATE THAT THE WITHIN MAP SHOWING PROPOSED BOUNDARIES OF JOHNSON RANCH LANDSCAPING AND LIGHTING DISTRICT, CITY OF ROSEVILLE, PLACER COUNTY, CALIFORNIA, WAS APPROVED BY THE CITY COUNCIL OF THE CITY OF ROSEVILLE AT A REGULAR MEETING THEREOF, HELD ON _____ DAY OF _____ 19____ BY ITS RESOLUTION NO. _____

CITY CLERK, CITY OF ROSEVILLE
COUNTY OF PLACER

COUNTY RECORDER'S FILING STATEMENT

FILED THIS _____ DAY OF _____ 19____ AT THE HOUR OF _____ O'CLOCK _____ IN BOOK _____ OF MAPS OF ASSESSMENT DISTRICTS AT PAGE _____ IN THE OFFICE OF THE COUNTY RECORDER IN THE COUNTY OF PLACER, STATE OF CALIFORNIA.

FILED _____ HART ANN MILSE, COUNTY RECORDER
COUNTY OF PLACER, CALIFORNIA

FOR _____ BY _____ DEPUTY

PRINTED
1992

ASSESSMENT DIAGRAM OF
JOHNSON RANCH
LANDSCAPING AND LIGHTING DISTRICT
ASSESSMENT YEAR 1992-1993
CITY OF ROSEVILLE,
CALIFORNIA
MAY, 1992
MORTON & PITALO, INC.
SHEET 1 OF 13 SHEETS

Exhibit A
Page 3 of 15
2092-155
2006

CLERK'S MAP FILING STATEMENT.
FILED IN THE OFFICE OF THE CITY CLERK OF THE CITY OF ROSEVILLE,
OF CALIFORNIA, THIS _____ DAY OF _____ 19__.

CITY CLERK, CITY OF ROSEVILLE

CLERK'S MAP STATEMENT.

AN ASSESSMENT WAS MADE BY THE CITY COUNCIL OF THE CITY OF ROSEVILLE, CALIFORNIA, IN THE YEAR 1992, AND THE CITY CLERK HAS BEEN ADVISED THAT THE CITY CLERK HAS RECEIVED FROM THE CITY ENGINEER A COPY OF THE ASSESSMENT MAP AND THE CITY ENGINEER HAS ADVISED THAT THE ASSESSMENT MAP IS CORRECT AND THAT THE CITY ENGINEER HAS NO OBJECTION TO THE ASSESSMENT MAP. THE CITY ENGINEER HAS ADVISED THAT THE ASSESSMENT MAP IS CORRECT AND THAT THE CITY ENGINEER HAS NO OBJECTION TO THE ASSESSMENT MAP. THE CITY ENGINEER HAS ADVISED THAT THE ASSESSMENT MAP IS CORRECT AND THAT THE CITY ENGINEER HAS NO OBJECTION TO THE ASSESSMENT MAP.

CITY CLERK, CITY OF ROSEVILLE

DIRECTOR OF PUBLIC WORKS/CITY ENGINEER
RECORDED IN THE OFFICE OF THE DIRECTOR OF PUBLIC WORKS/CITY ENGINEER
OF THE CITY OF ROSEVILLE THIS _____ DAY OF _____ 19__.

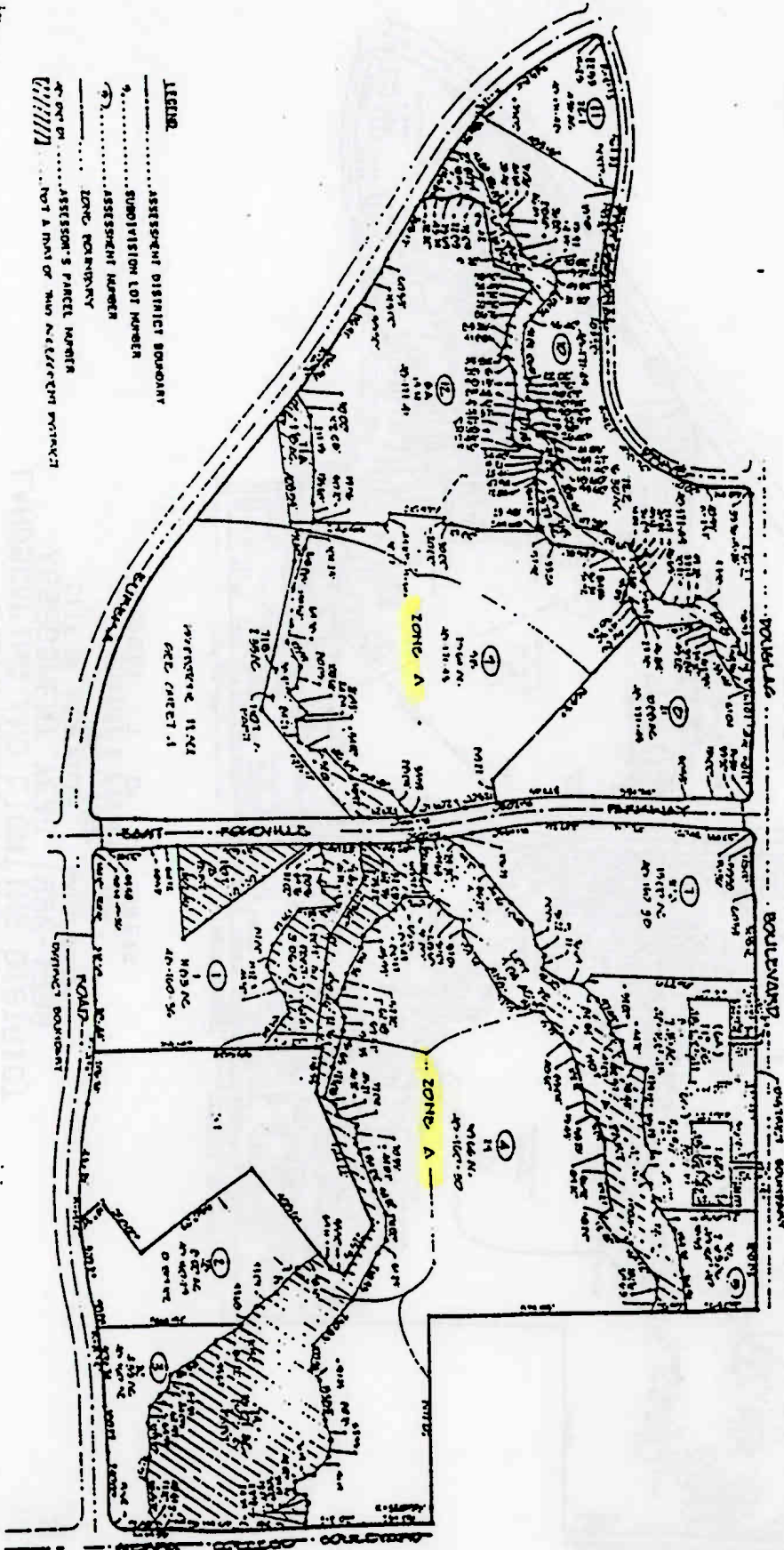
DIRECTOR OF PUBLIC WORKS/CITY ENGINEER

COUNTY RECORDER'S FILING STATEMENT

FILED THIS _____ DAY OF _____ 1992, AT THE HEAD
OFFICE OF THE COUNTY CLERK OF THE COUNTY OF PLACER,
STATE OF CALIFORNIA.
MORTON & PITALO, INC.
COUNTY OF PLACER, CALIFORNIA
REC. _____ BY _____ DEPUTY

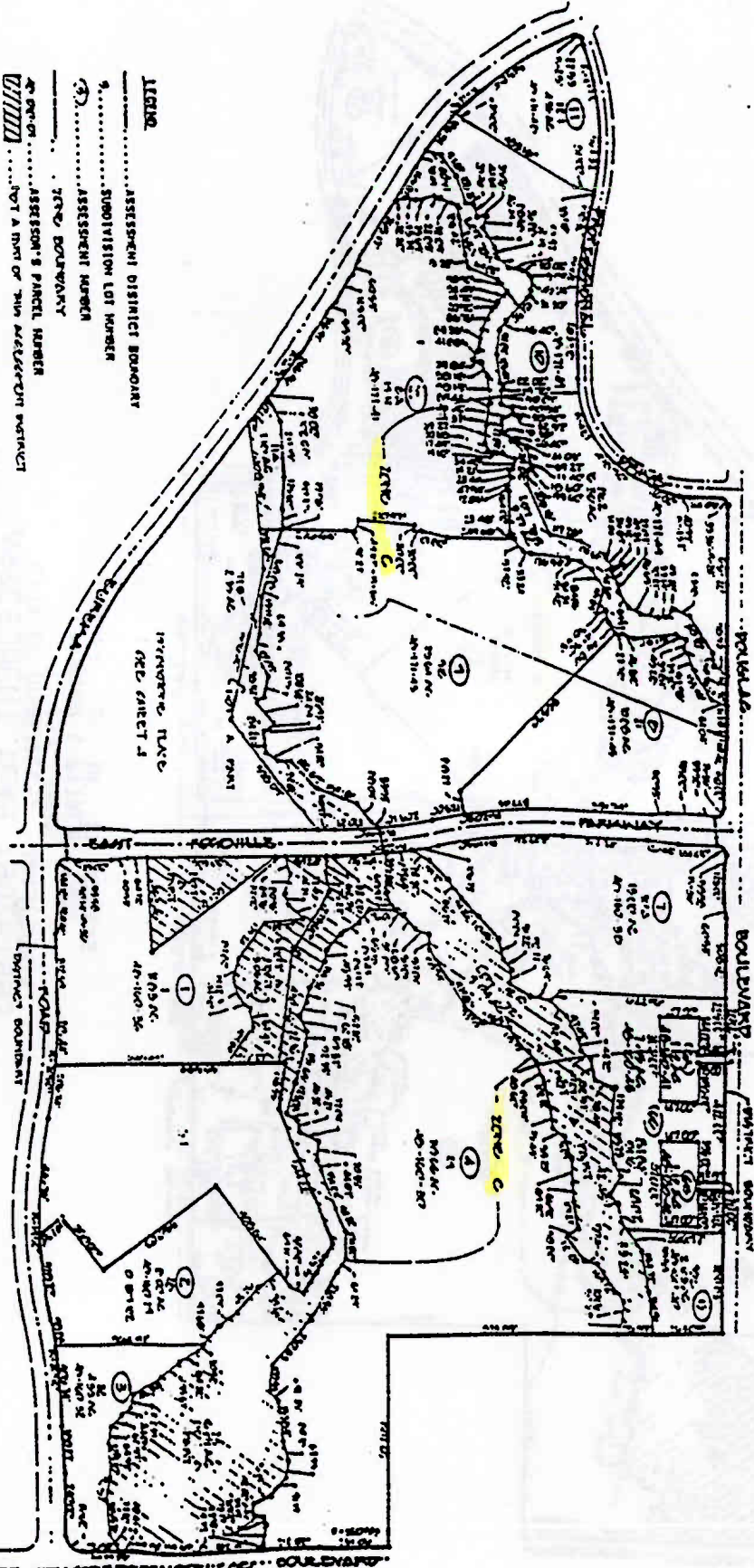
PRINTED
MAY 20 1992
MORTON & PITALO, INC.

ASSESSMENT DIAGRAM OF
JOHNSON RANCH
LANDSCAPING AND LIGHTING DISTRICT
ASSESSMENT YEAR 1992-1993
CITY OF ROSEVILLE, CALIFORNIA
MAY, 1992
HORTON & PITALO, INC.
SHEET 2 OF 13 SHEETS



SCALE
1. DISTANCES ALONG CURVED LINES ARE CHORD DISTANCES.

ASSESSMENT DIAGRAM OF
JOHNSON RANCH
LANDSCAPING AND LIGHTING DISTRICT
ASSESSMENT YEAR 1992-1993
CITY OF ROSEVILLE, CALIFORNIA
MAY, 1992
HORTON & PITALO, INC.
SHEET 3 OF 13 SHEETS

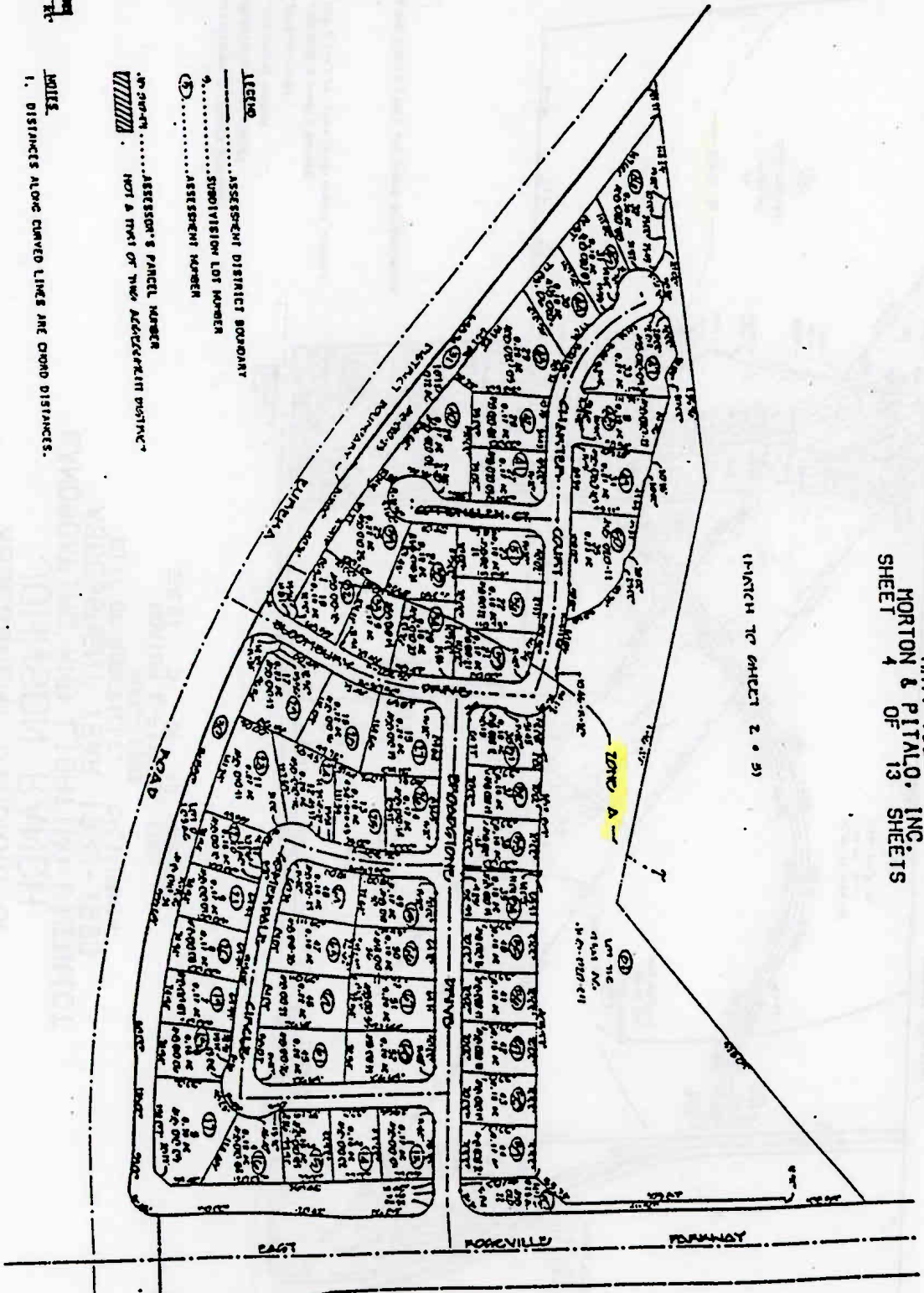


NOTES
1. DISTRICTS ALONG CURVED LINES ARE CROWN DISTANCES.

2092 155

ASSESSMENT DIAGRAM OF
JOHNSON RANCH
LANDSCAPING AND LIGHTING DISTRICT
ASSESSMENT YEAR 1992-1993
CITY OF ROSEVILLE, CALIFORNIA
MAY, 1992
HORTON & PITALO, INC.
SHEET 4 OF 13 SHEETS

(CONTINUED TO SHEET 2 OF 5)



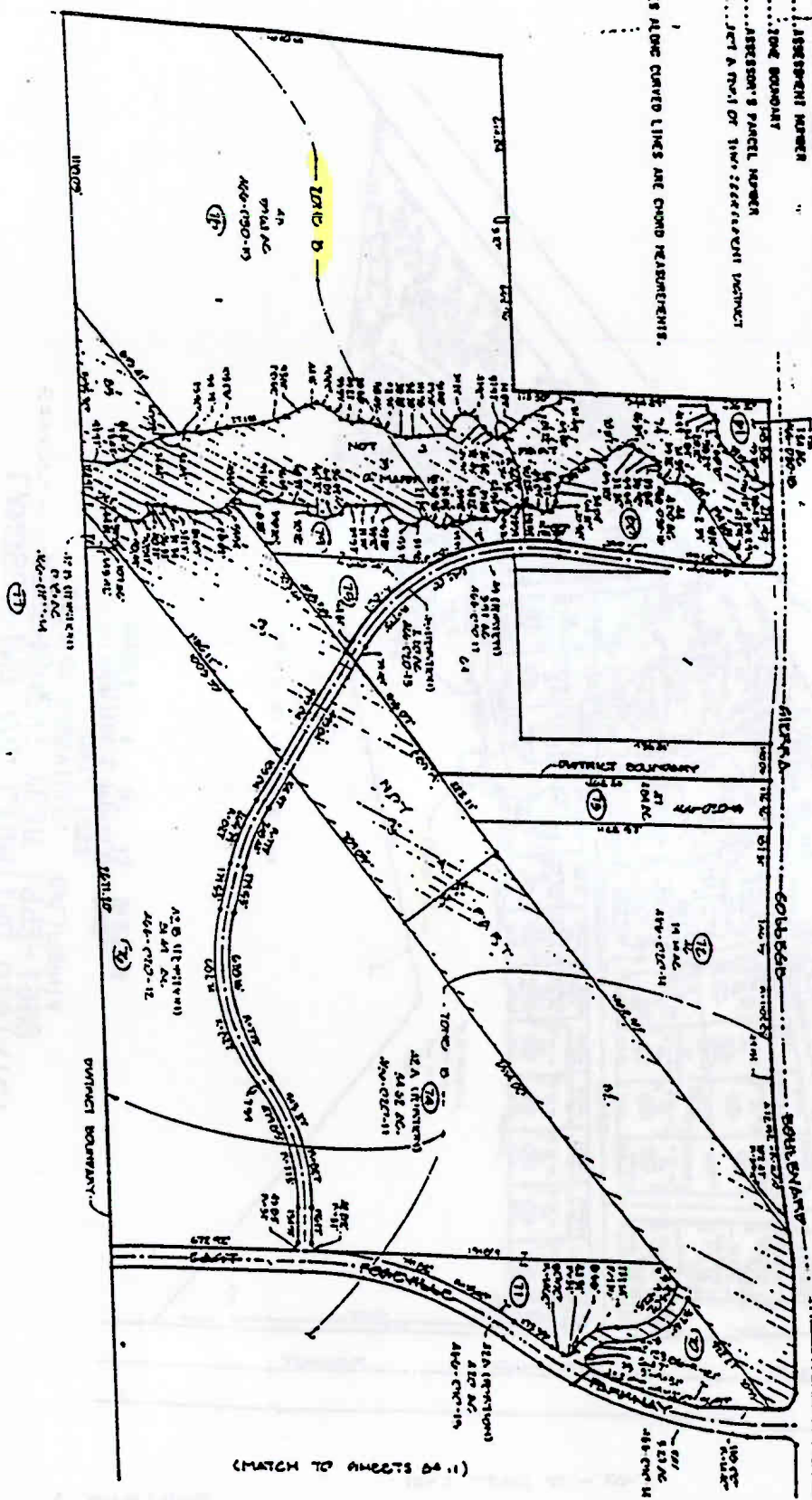
LEGEND
----- ASSESSMENT DISTRICT BOUNDARY
..... SIMPLIFICATION LOT NUMBER
①..... ASSESSMENT NUMBER
▨..... ASSESSOR'S PARCEL NUMBER
NOT A PART OF THIS ASSESSMENT DISTRICT

NOTES
1. DISTANCES ALONG CURVED LINES ARE CHORD DISTANCES.

(CONTINUED TO SHEET 2 OF 5)

ASSESSMENT DIAGRAM OF
JOHNSON RANCH
 LANDSCAPING AND LIGHTING DISTRICT
 ASSESSMENT YEAR 1992-1993
 CITY OF ROSEVILLE, CALIFORNIA
 MAY, 1992
 HORTON & PITLLO, INC.
 SHEET 5 OF 13 SHEETS

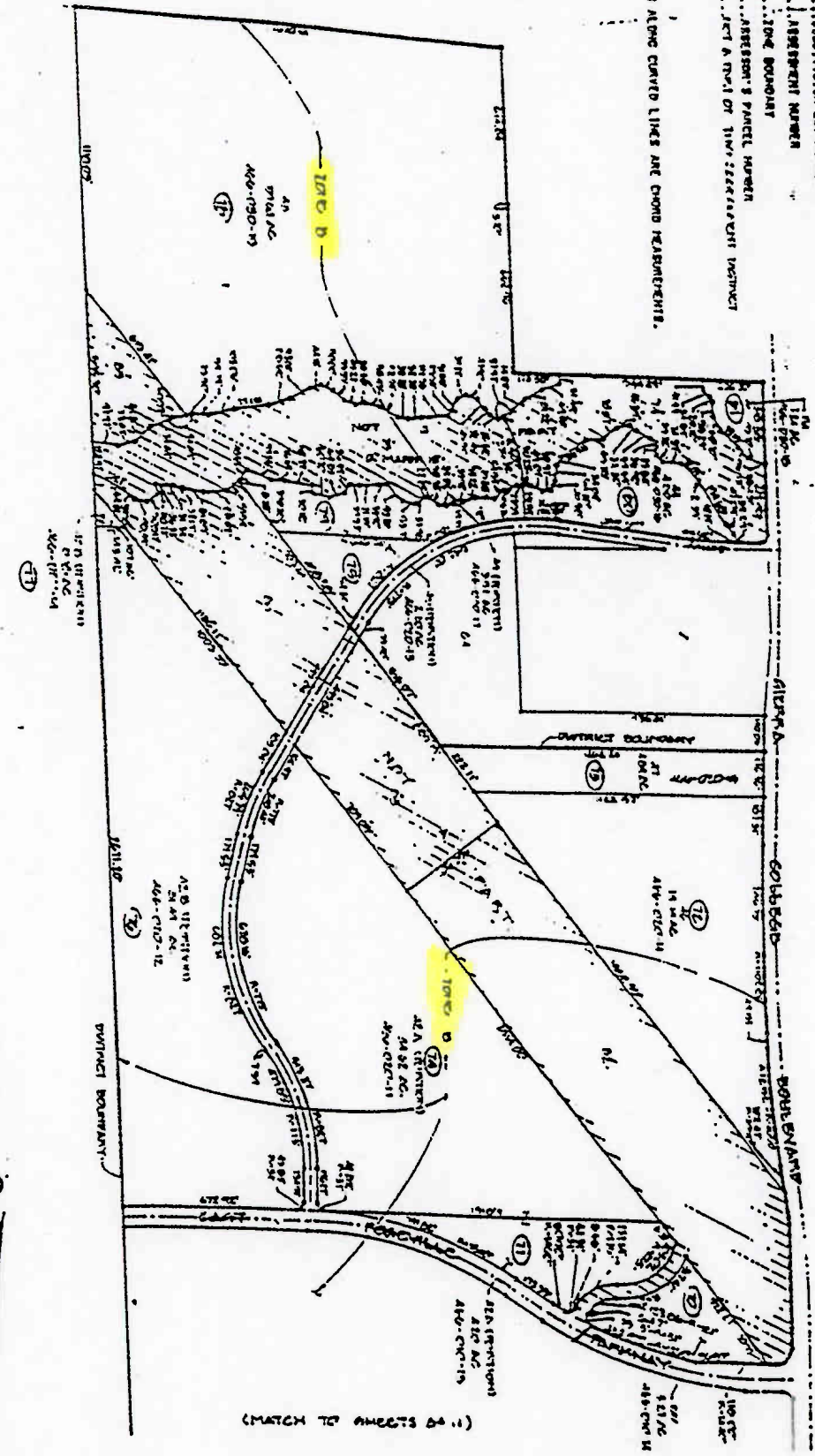
- LEGEND
- ASSESSMENT DISTRICT BOUNDARY
 - SUBDIVISION LOT NUMBER
 - ASSESSMENT NUMBER
 - ZONE BOUNDARY
 - ASSESSOR'S PARCEL NUMBER
 - LOT & PART OF THE ASSESSMENT DISTRICT
- NOTES
- 1. DISTANCES ALONG CURVED LINES ARE CHORD MEASUREMENTS.



2092-155
 2010

ASSESSMENT DIAGRAM OF
JOHNSON RANCH
 LANDSCAPING AND LIGHTING DISTRICT
 ASSESSMENT YEAR 1992-1993
 CITY OF ROSEVILLE, CALIFORNIA
 MAY, 1992
 MORTON & PITALO, INC.
 SHEET 5 OF 13 SHEETS

- LEGEND
- ASSESSMENT DISTRICT BOUNDARY
 - SUBDIVISION LOT NUMBER
 - ASSESSMENT NUMBER
 - TOWN BOUNDARY
 - ASSESSOR'S PARCEL NUMBER
 - ACT A OR I OF THE 1992 ASSESSMENT DISTRICT
 - WELLS
 - DISTANCES ALONG CURVED LINES ARE CHORD MEASUREMENTS.

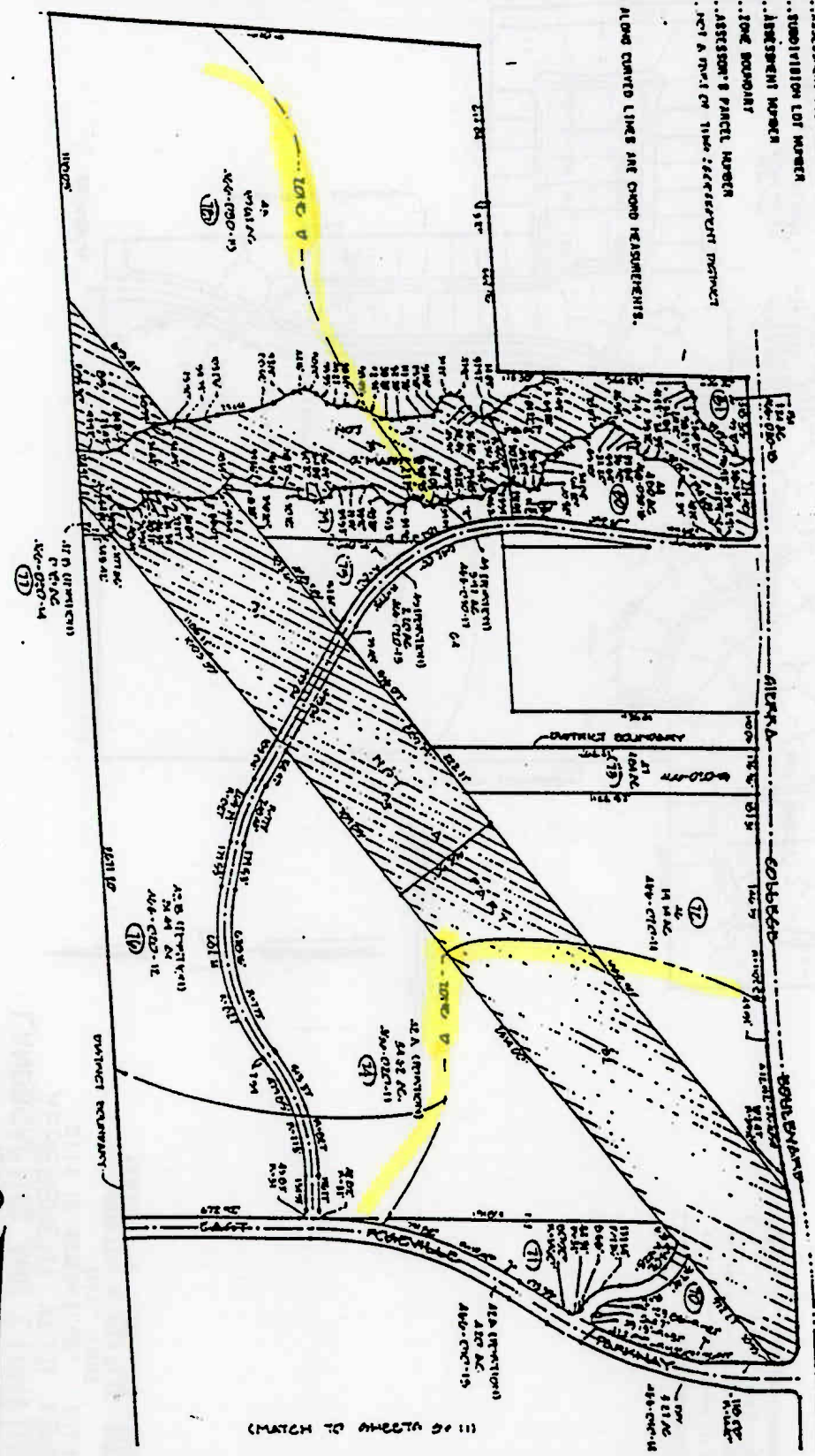


2092-155

ASSESSMENT DIAGRAM OF
JOHNSON RANCH
 LANDSCAPING AND LIGHTING DISTRICT
 ASSESSMENT YEAR 1992-1993
 CITY OF ROSEVILLE, CALIFORNIA
 MAY, 1992
 HORTON & PITALO, INC.
 SHEET 6 OF 13 SHEETS

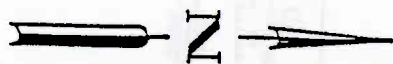
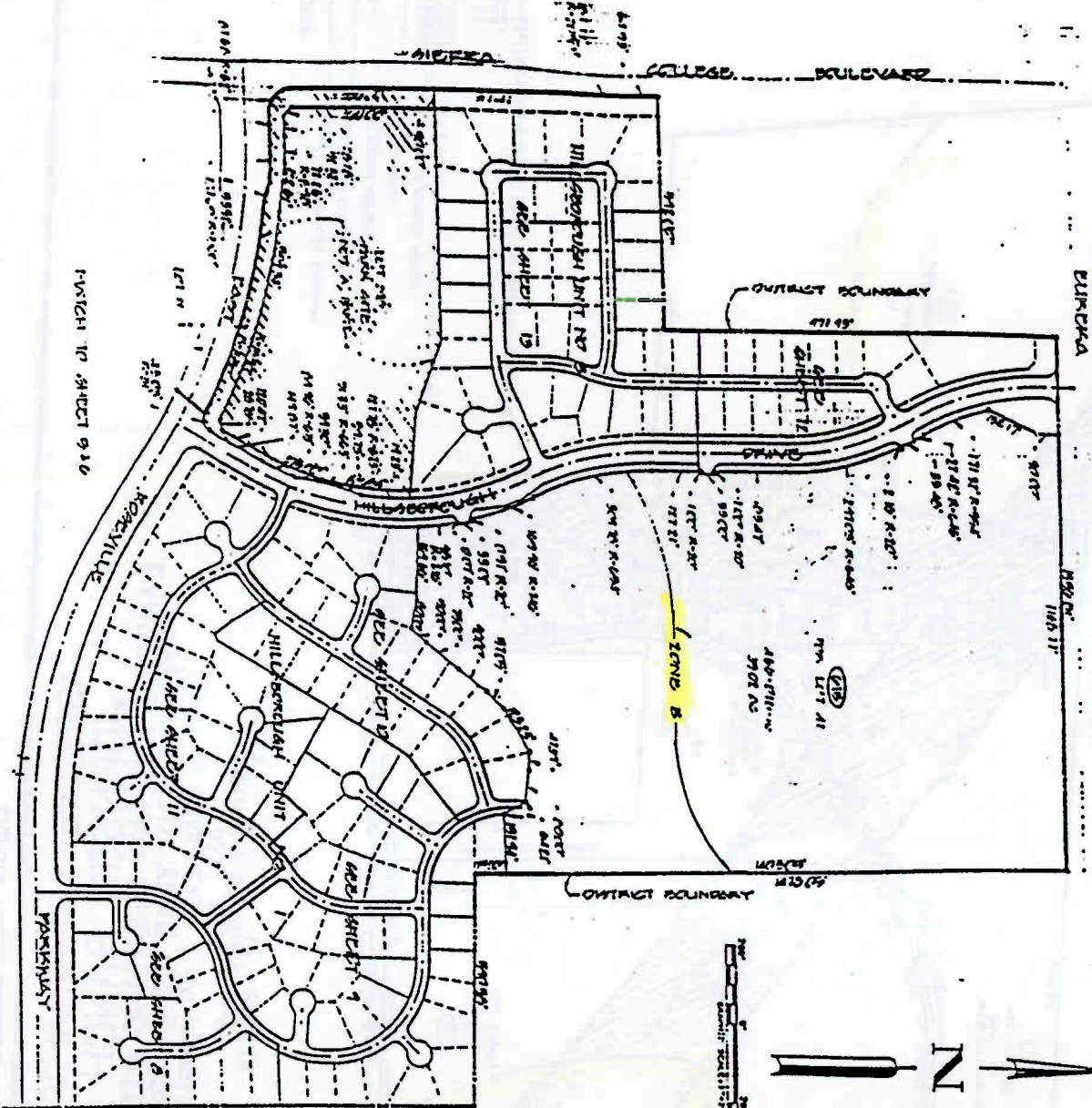
LEGEND

- 1. ASSESSMENT DISTRICT BOUNDARY
- 2. SUBDIVISION LOT NUMBER
- 3. LANDSCAPING WORKS
- 4. TOWN BOUNDARY
- 5. ASSISTOR'S PARCEL NUMBER
- 6. DISTANCES ALONG CURVED LINES ARE CHORD MEASUREMENTS.



ASSESSMENT DIAGRAM OF
JOHNSON RANCH
 LANDSCAPING AND LIGHTING DISTRICT
 ASSESSMENT YEAR 1992-1993
 CITY OF ROSEVILLE, CALIFORNIA
 MAY, 1992
 HORTON & PITALO, INC.
 SHEET 7 OF 13 SHEETS

2092155
 0910



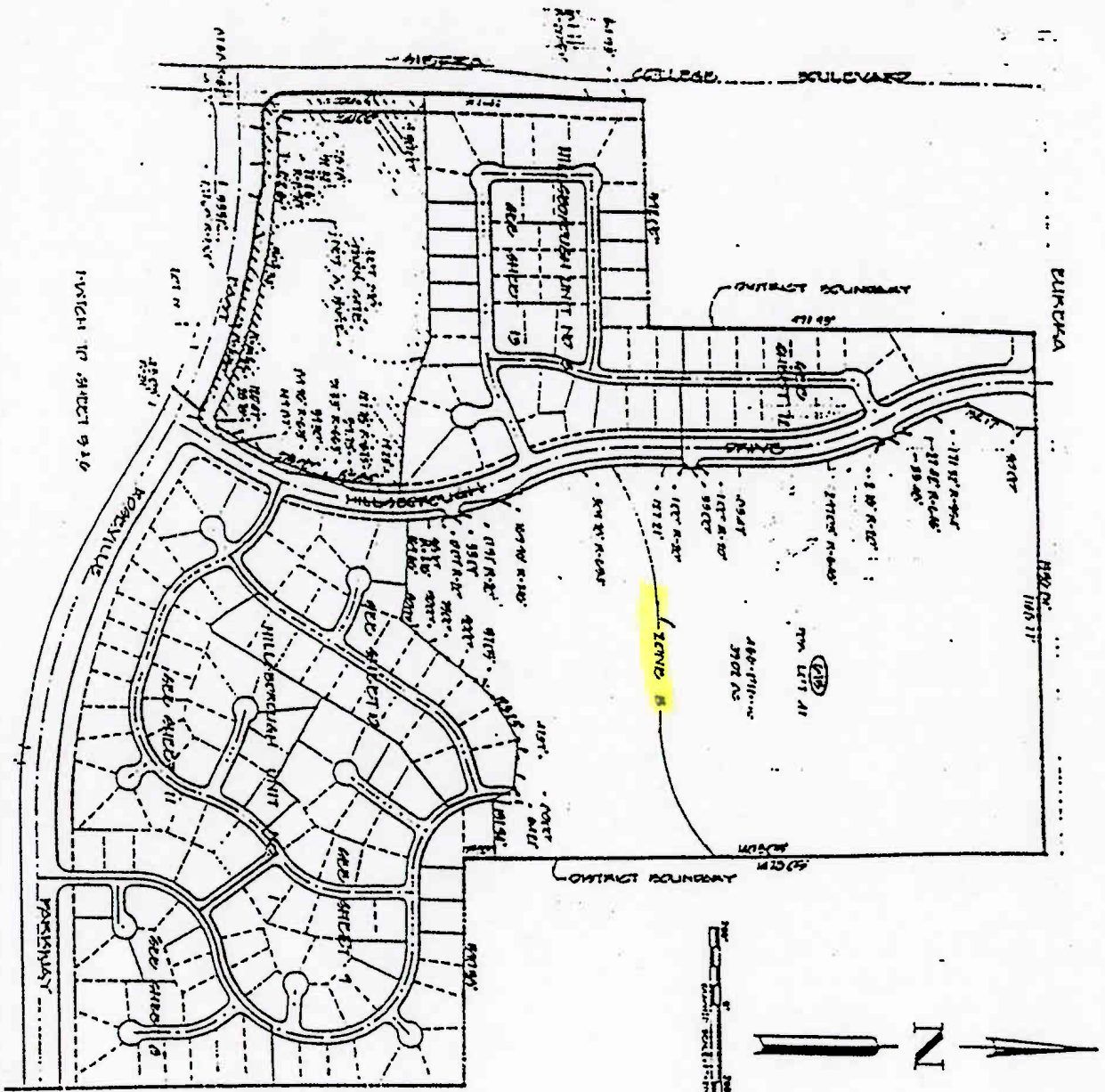
LEGEND.
 ASSESSMENT DISTRICT BOUNDARY
 SUBDIVISION LOT NUMBER
 468-190-02... ASSESSOR'S PARCEL NUMBER
 NOT A PART OF THIS ASSESSMENT DISTRICT
 (X) ASSESSMENT NUMBER

NOTES
 1. DISTANCES ALONG CURVED LINES ARE GROUND MEASUREMENTS

PLAT TO SHEET 930

ASSESSMENT DIAGRAM OF
JOHNSON RANCH
 LANDSCAPING AND LIGHTING DISTRICT
 ASSESSMENT YEAR 1992-1993
 CITY OF ROSEVILLE, CALIFORNIA
 MAY, 1992
 HORTON & PITALO, INC.
 SHEET 7 OF 13 SHEETS

2092 1510
 5100



LEGEND
 ASSESSMENT DISTRICT BOUNDARY
 SUBDIVISION LOT NUMBER
 466-140-02.....ASSESSOR'S PARCEL NUMBER
 NOT A PART OF THIS ASSESSMENT DISTRICT
 (S).....ASSESSMENT MAPS

NOTES
 1. DISTANCES ALONG CURVED LINES ARE ROUNDED

1-1/2" = 10' SHEET 9-10

ASSESSMENT DIAGRAM OF
JOHNSON RANCH
 LANDSCAPING AND LIGHTING DISTRICT
 ASSESSMENT YEAR 1992-1993
 CITY OF ROSEVILLE, CALIFORNIA
 MAY, 1992
 HORTON & PITALO, INC.
 SHEET 8 OF 13 SHEETS

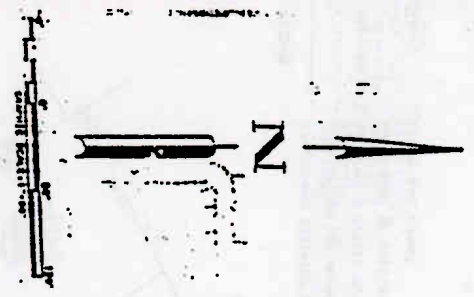
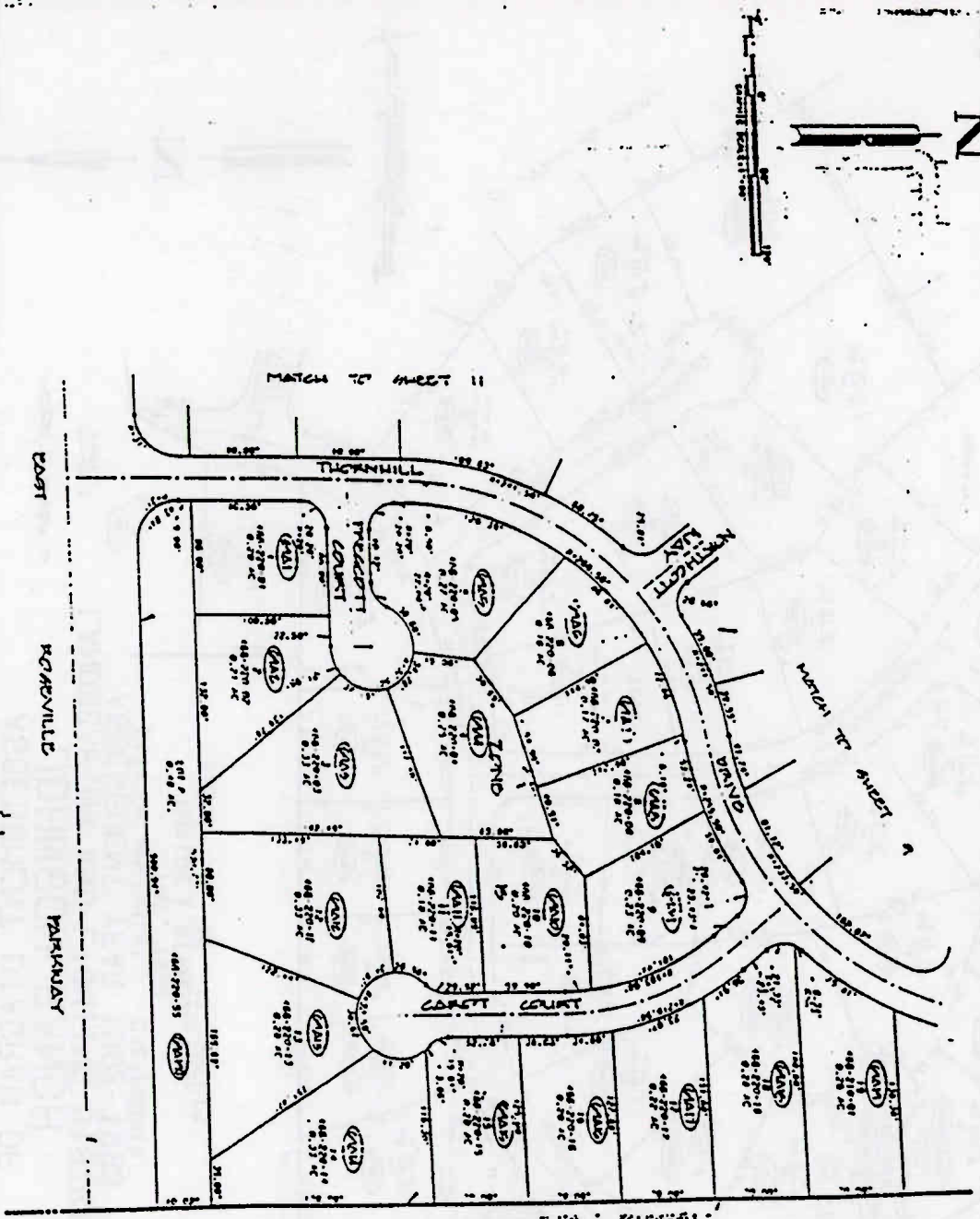


Exhibit A
 Page 10 of 15

LEGEND

.....ASSESSMENT DISTRICT BOUNDARY

.....SUBDIVISION LOT NUMBER

466-190-07...ASSESSOR'S PARCEL NUMBER

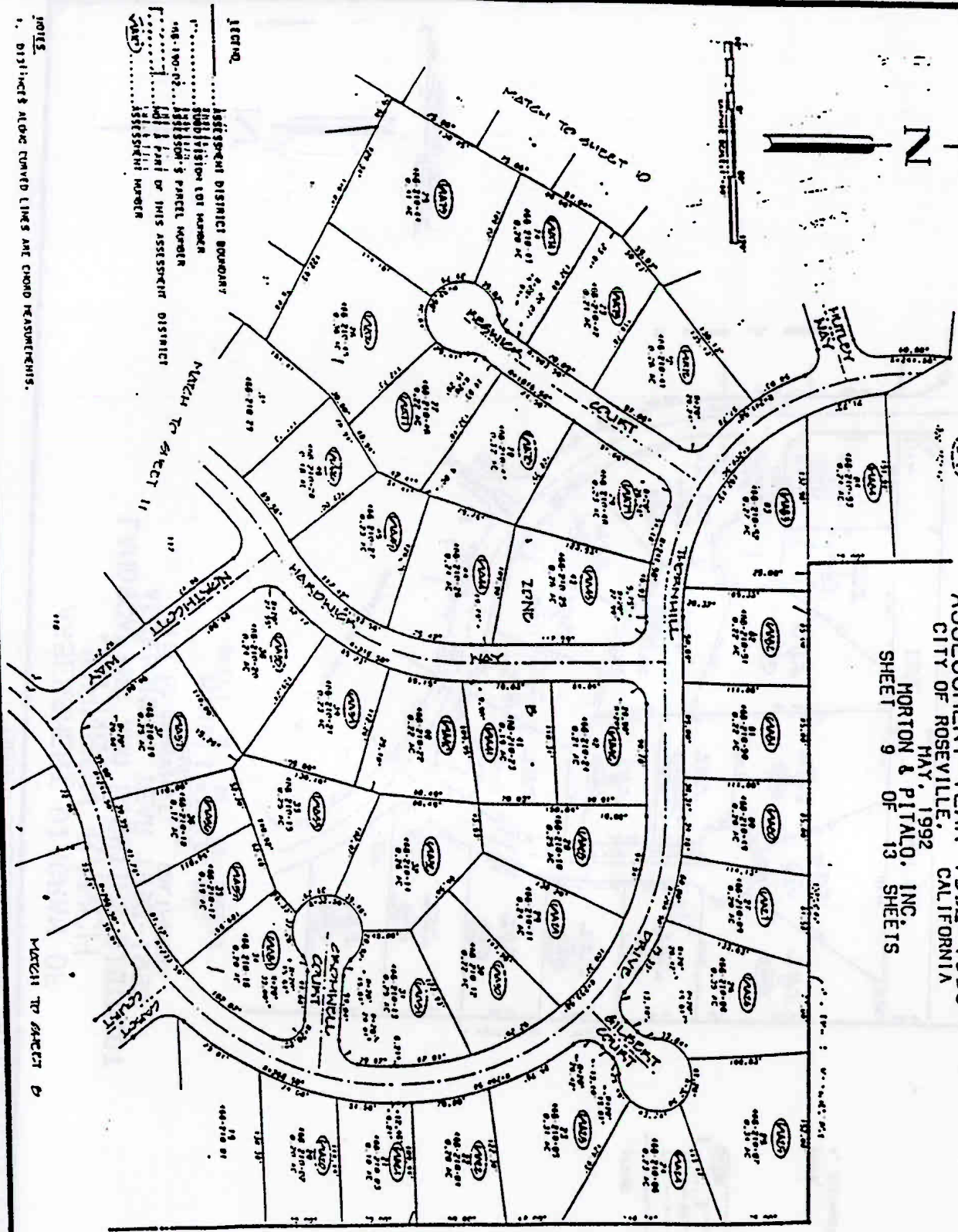
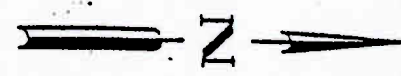
.....NOT A PART OF THIS ASSESSMENT DISTRICT

(KAD).....ASSESSMENT NUMBER

NOTES

1. DISTANCES ALONG CURVED LINES ARE APPROXIMATE.

ASSESSMENT DIAGRAM OF
JOHNSON RANCH
LANDSCAPING AND LIGHTING DISTRICT
ASSESSMENT YEAR 1992-1993
CITY OF ROSEVILLE, CALIFORNIA
MAY, 1992
HORTON & PITALO, INC.
SHEET 9 OF 13 SHEETS



LEGEND
..... ASSESSMENT DISTRICT BOUNDARY
..... SUBDIVISION LOT NUMBER
448-710-01..... LOT & PARCEL NUMBER
..... PART OF THIS ASSESSMENT DISTRICT
..... ASSESSMENT NUMBER

NOTES
1. DISTRICT & ALONG CURVED LINES ARE CHORD MEASUREMENTS.

20092-155
0014

ASSESSMENT DIAGRAM OF
JOHNSON RANCH
 LANDSCAPING AND LIGHTING DISTRICT
 ASSESSMENT YEAR, 1992-1993
 CITY OF ROSEVILLE, CALIFORNIA
 MAY, 1992
 HORTON & PITALO, INC.
 SHEET 10 OF 13 SHEETS

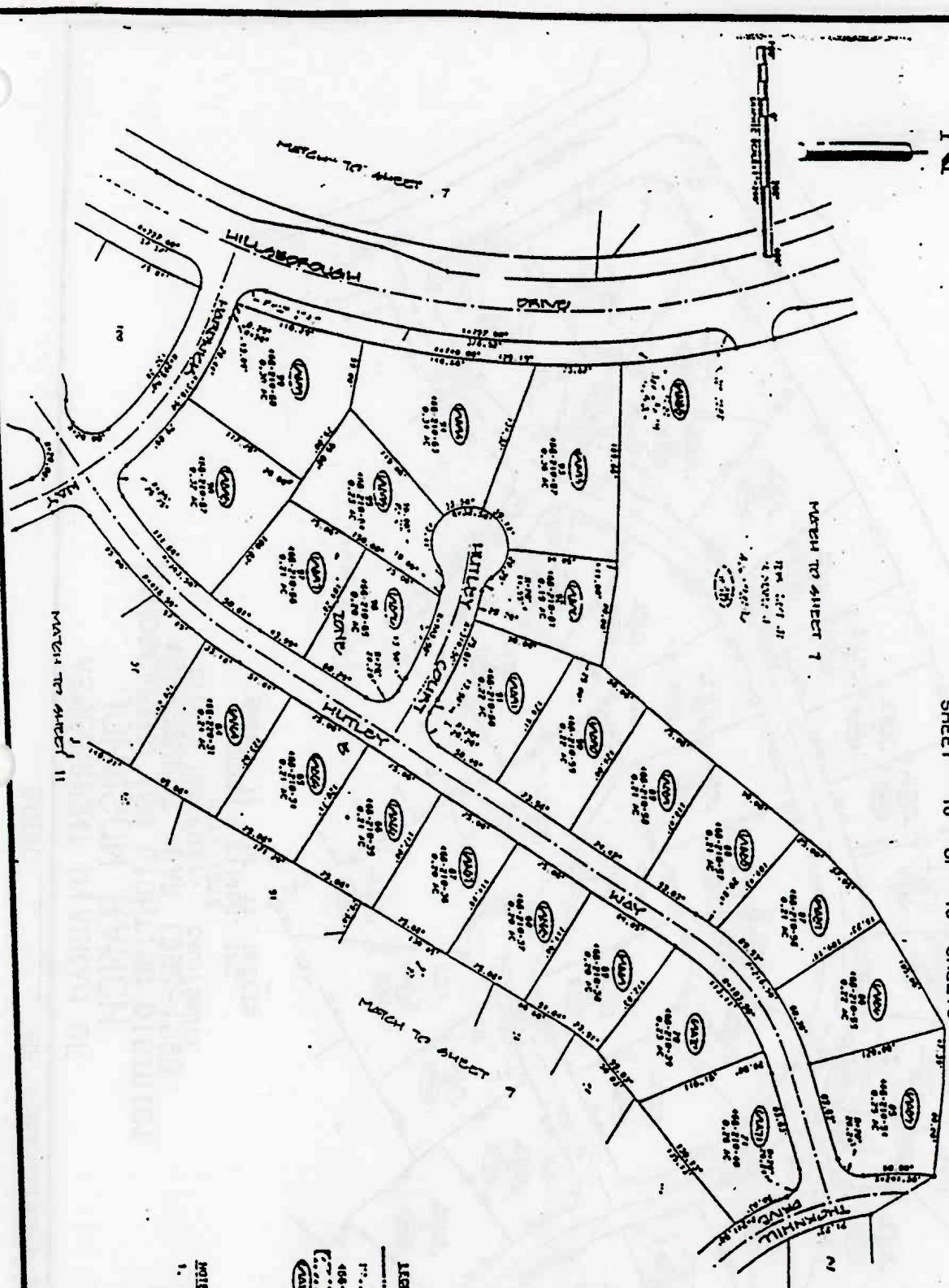
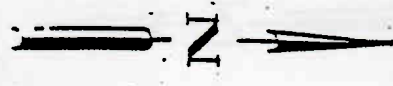


Exhibit A
 Page 12 of 15

LEGEND

.....ASSESSMENT DISTRICT BOUNDARY

.....SUBDIVISION LOT NUMBER

100-190-02-ASSESSOR'S PARCEL NUMBER

.....NOT A PART OF THIS ASSESSMENT DISTRICT

.....ASSESSMENT NUMBER

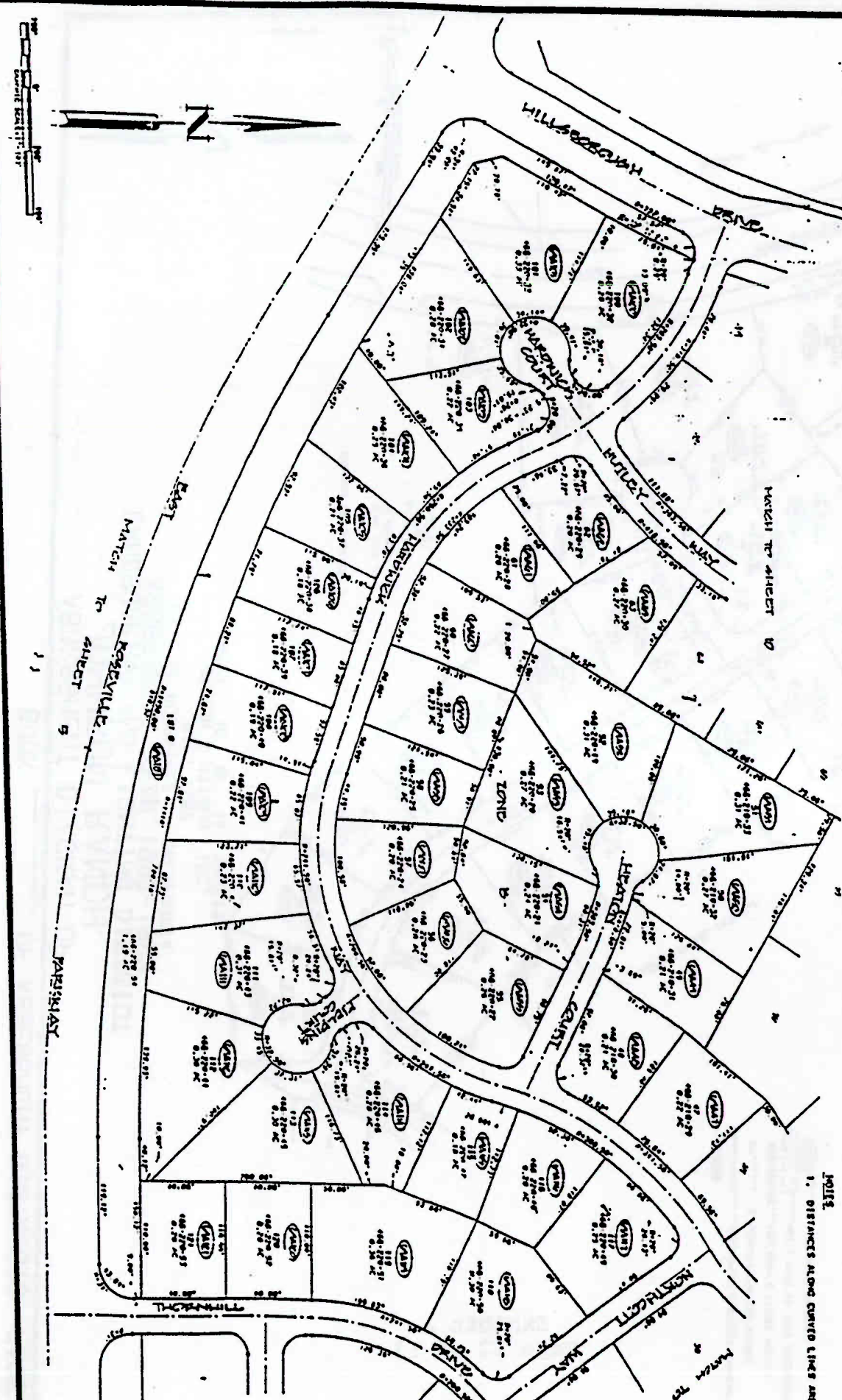
NOTES

1. DISTANCES ALONG AAVED LINES ARE GIVEN IN FEET.

ASSESSMENT DIAGRAM OF
JOHNSON RANCH
LANDSCAPING AND LIGHTING DISTRICT
ASSESSMENT YEAR 1992-1993
CITY OF ROSEVILLE, CALIFORNIA
MAY, 1992
MORTON & PITALO, INC.
SHEET 11 OF 13 SHEETS

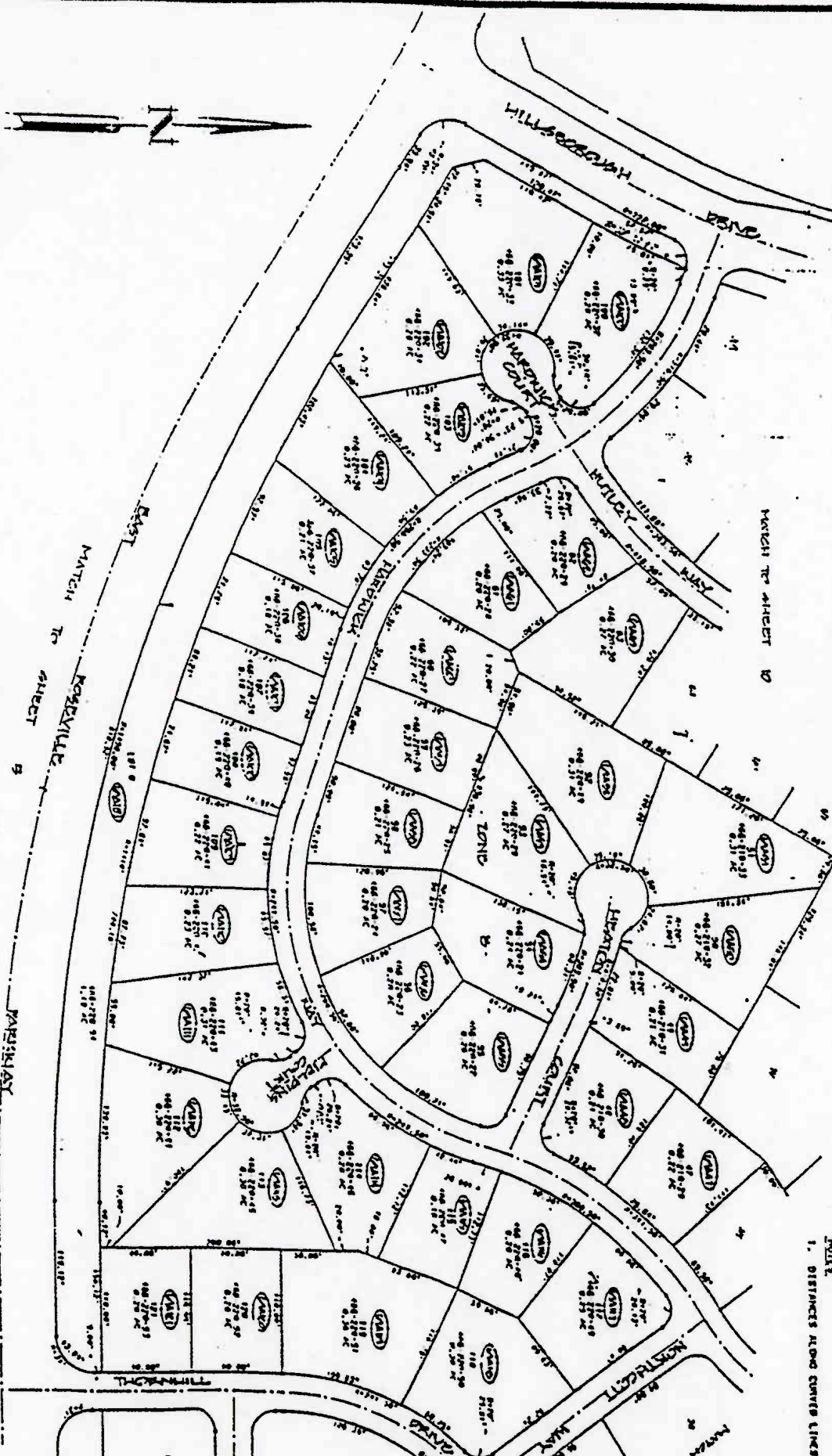
LEGEND
.....ASSESSMENT DISTRICT BOUNDARY
.....SUBDIVISION LOT NUMBER
446-190-02.....ASSESSOR'S PARCEL NUMBER
.....NOT A PART OF THIS ASSESSMENT
.....ASSESSMENT NUMBER

NOTES
1. DISTANCES ALONG CURVED LINES ARE CHORDS



ASSESSMENT DIAGRAM OF
JOHNSON RANCH
LANDSCAPING AND LIGHTING DISTRICT
ASSESSMENT YEAR 1992-1993
CITY OF ROSEVILLE, CALIFORNIA

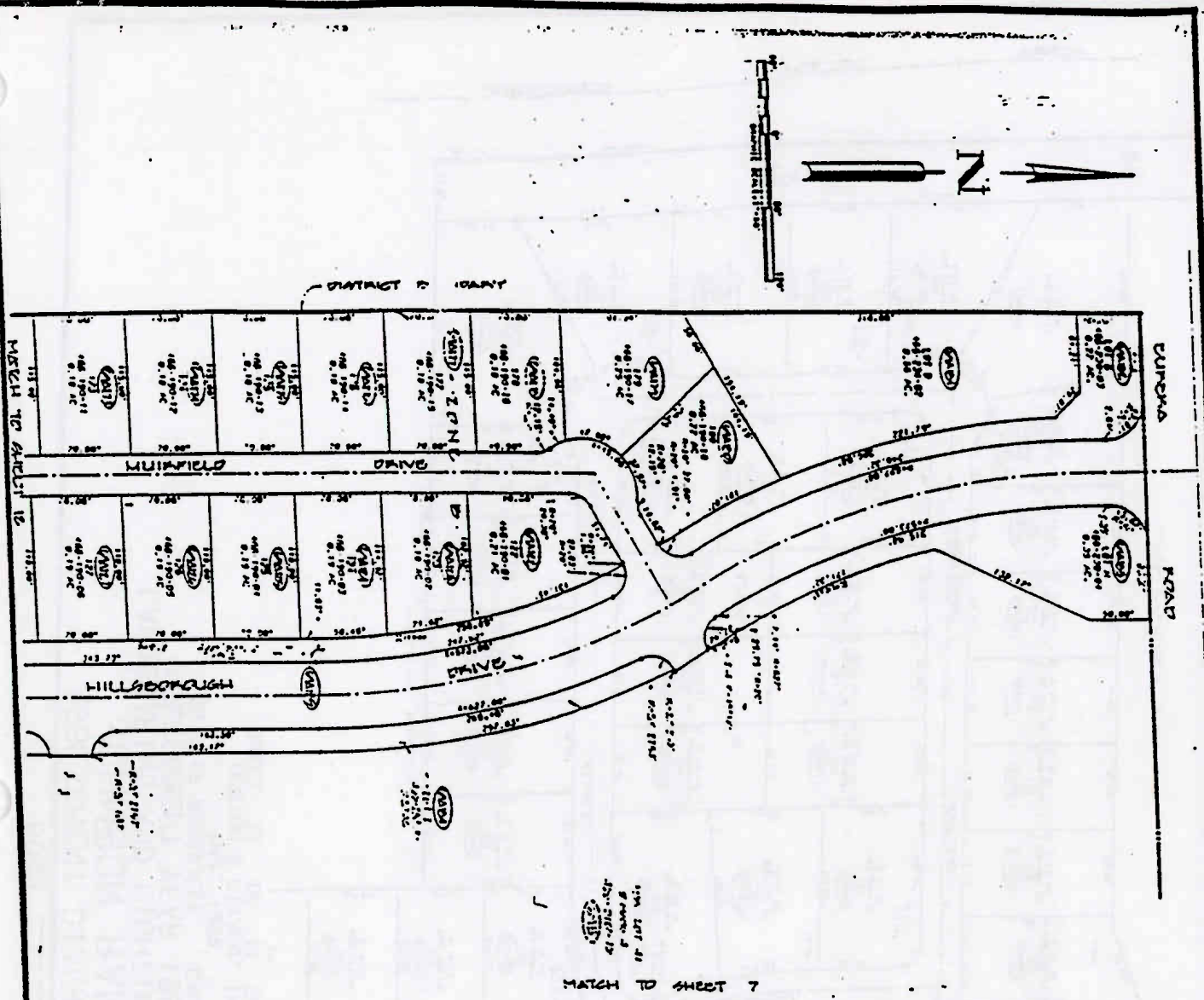
MAY, 1992
MORTON & PITALO, INC.
SHEET 11 OF 13 SHEETS



Legend
ASSESSMENT DISTRICT BOUNDARY
REGISTRATION LOT NUMBER
ASSESSOR'S PARCEL NUMBER
ASSESSMENT NUMBER

NOTES
1. DISTANCES ALONG CURVED LINES ARE

ASSESSMENT DIAGRAM OF
JOHNSON RANCH
 LANDSCAPING AND LIGHTING DISTRICT
 ASSESSMENT YEAR 1992-1993
 CITY OF ROSEVILLE, CALIFORNIA
 MAY, 1992
 HORTON & PITALO, INC.
 SHEET 12 OF 13 SHEETS



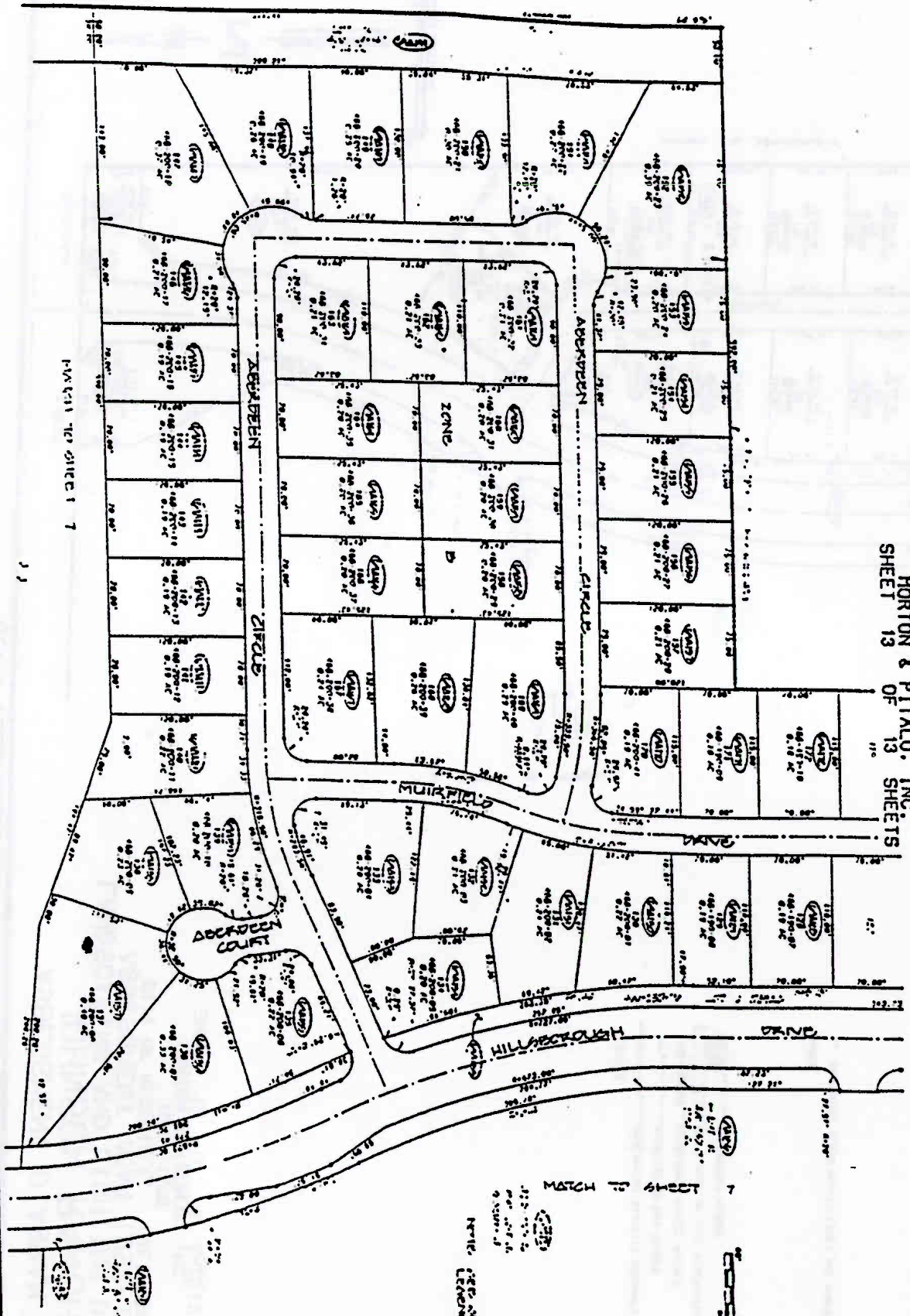
7 LEGS OF LOT 41
 466-100-12
 MATCH TO SHEET 13

LEGEND
 ----- ASSESSMENT DISTRICT BOUNDARY
 R..... SUBDIVISION LOT NUMBER
 466-100-02.....ASSESSOR'S PARCEL NUMBER
 1.....NOT A PART OF THIS ASSESSMENT DISTRICT
 (466).....ASSESSMENT NUMBER

NOTES
 1. DISTANCES ALONG CURVED LINES ARE CHORD MEASUREMENTS.

ASSESSMENT DIAGRAM OF
JOHNSON RANCH
LANDSCAPING AND LIGHTING DISTRICT
ASSESSMENT YEAR 1992-1993
CITY OF ROSEVILLE, CALIFORNIA

MAY, 1992
HORTON & PITALO, INC.
SHEET 13 OF 13 SHEETS



2092155
pg 18
Exhibit A

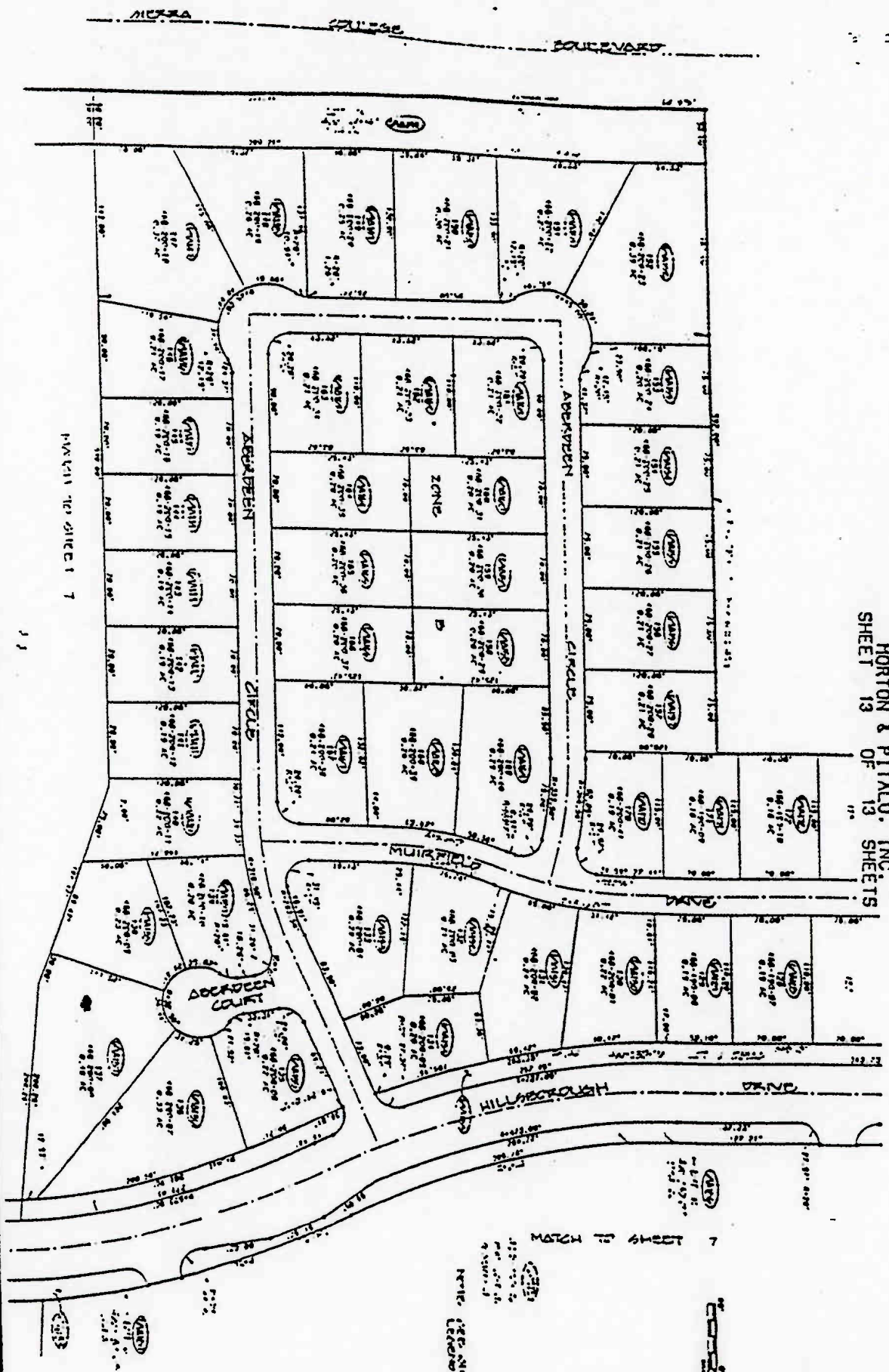
PARTIAL TO SHEET 7

MATCH TO SHEET 7

NOTE: SEE SHEET 11 FOR
LEGEND AND DETAILS

ASSESSMENT DIAGRAM OF
JOHNSON RANCH
LANDSCAPING AND LIGHTING DISTRICT
ASSESSMENT YEAR 1992-1993
CITY OF ROSEVILLE, CALIFORNIA

HORTON & PITALO, INC.
MAY, 1992
SHEET 13 OF 13 SHEETS



2092155
p 818
Exhibit A

