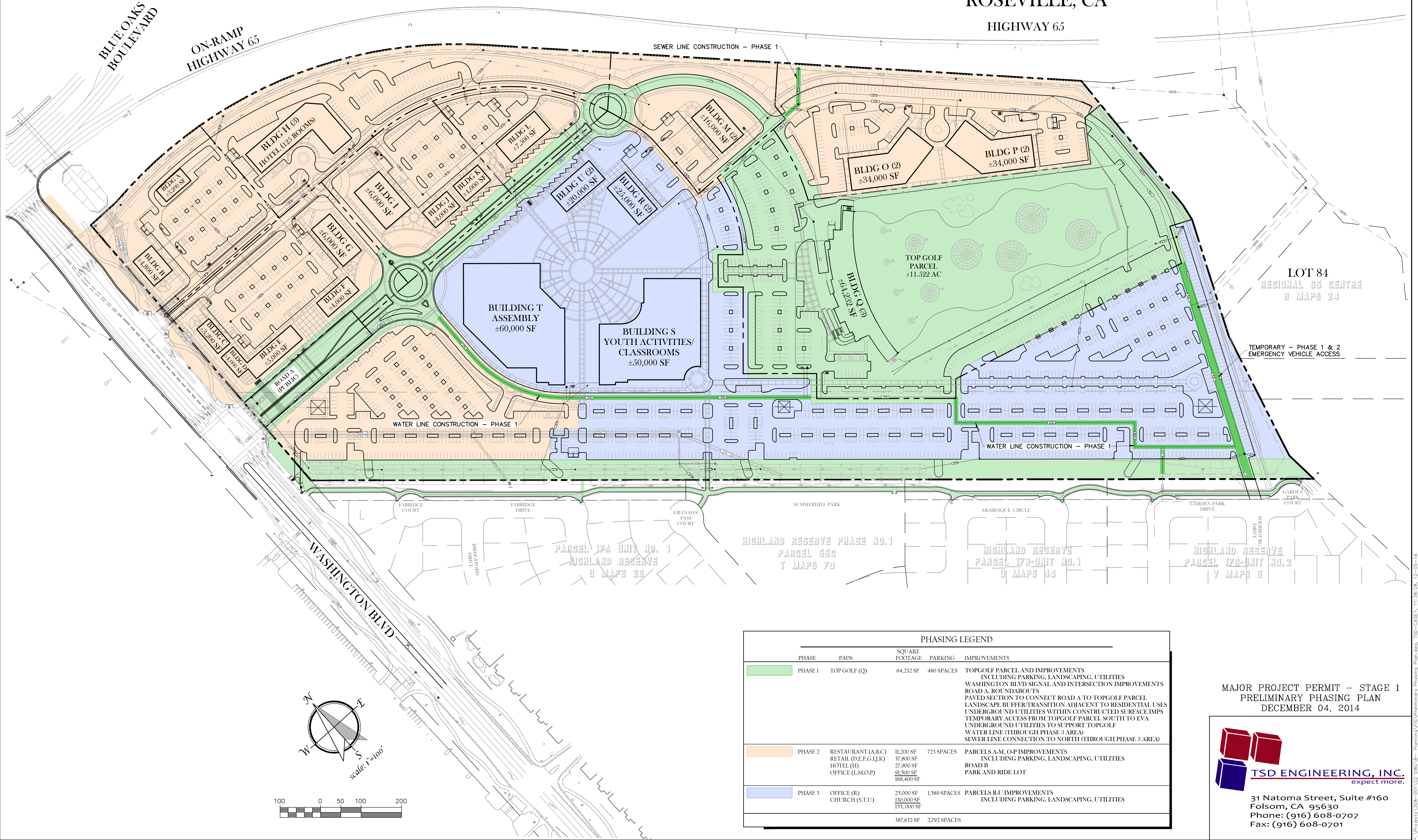


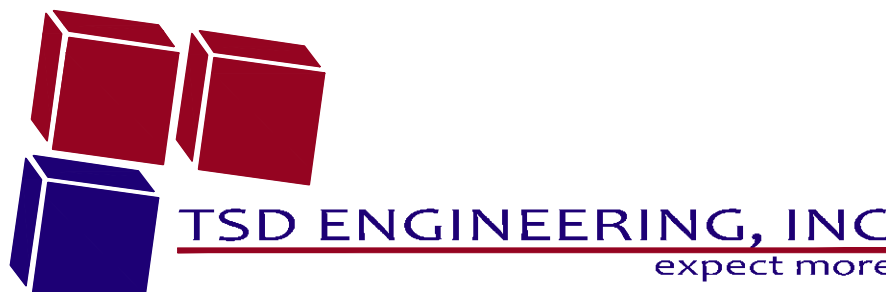
PRELIMINARY PHASING PLAN
NCRSP - PARCEL 49
MAJOR PROJECT PERMIT - STAGE 1
ROSEVILLE, CA

HIGHWAY 65



PHASING LEGEND					
PHASE	PADS	SQUARE FOOTAGE	PARKING	IMPROVEMENTS	
PHASE 1	TOP GOLF (Q)	64,232 SF	480 SPACES	TOPGOLF PARCEL AND IMPROVEMENTS INCLUDING PARKING, LANDSCAPING, UTILITIES WASHINGTON BLVD SIGNAL AND INTERSECTION IMPROVEMENTS ROAD A, ROUNDABOUTS PAVED SECTION TO CONNECT ROAD A TO TOPGOLF PARCEL LANDSCAPE BUFFER/TRANSITION ADJACENT TO RESIDENTIAL USES UNDERGROUND UTILITIES WITHIN CONSTRUCTED SURFACE IMPS TEMPORARY ACCESS FROM TOPGOLF PARCEL SOUTH TO EVA UNDERGROUND UTILITIES TO SUPPORT TOPGOLF WATER LINE (THROUGH PHASE 3 AREA) SEWER LINE CONNECTION TO NORTH (THROUGH PHASE 3 AREA)	
PHASE 2	RESTAURANT (A,B,C) RETAIL (D,E,F,G,I,J,K) HOTEL (H) OFFICE (L,M,O,P)	11,200 SF 37,800 SF 27,900 SF 91,500 SF 168,400 SF	723 SPACES	PARCELS A-M, O-P IMPROVEMENTS INCLUDING PARKING, LANDSCAPING, UTILITIES ROAD B PARK AND RIDE LOT	
PHASE 3	OFFICE (R) CHURCH (S,T,U)	25,000 SF 130,000 SF 155,000 SF	1,589 SPACES	PARCELS R-U IMPROVEMENTS INCLUDING PARKING, LANDSCAPING, UTILITIES	
		387,632 SF	2,792 SPACES		

MAJOR PROJECT PERMIT - STAGE 1
PRELIMINARY PHASING PLAN
DECEMBER 04, 2014



31 Natoma Street, Suite #160
Folsom, CA 95630
Phone: (916) 608-0707
Fax: (916) 608-0701