

Dry Creek Greenway **West Planning and Feasibility Study**

A MULTI-USE PAVED TRAIL ALONG DRY CREEK, FROM COOK RIOLO ROAD TO RIVERSIDE AVENUE

Online Questionnaire 4.9.2018 - 4.24.2018

SUMMARY

Online Questionnaire Summary

Introduction

The Dry Creek Greenway West Planning and Feasibility Study will evaluate the possibility of developing a 3-mile multi-use trail between Cook Riolo Road and Riverside Avenue. The trail would ultimately connect with the existing Dry Creek Greenway in unincorporated Placer County, west of Cook Riolo Road and the proposed Dry Creek Greenway East (Riverside Avenue to Old Auburn Road).

Community Outreach Approach

The project team engaged with the City of Roseville community members to gather concerns and input on the current opportunities and constraints of the study corridor as well as input about regional and county trails.

As part of the engagement process, the project team hosted a community open house on Monday, April 9. This open house gave community members the opportunity to learn about the potential trail, its context within the overall regional trail network, and to provide input on existing conditions along the study corridor. Along with the community open house, the project team launched a brief online questionnaire. This was available in a hard copy at the open house, as well as on the City of Roseville's website for two weeks, from Monday April 9 through Tuesday at midnight, April 24. The project team also collected responses at the April 21 Placer County Earth Day Celebration through printed questionnaires.

Methodology

This brief online questionnaire served as a forum for the community to contribute input on the current and potential trail usage study corridor and help the project team gather information about what the potential trail would be most used for and what would make the community use the trail.

The eight questions that appear in this summary focus on:

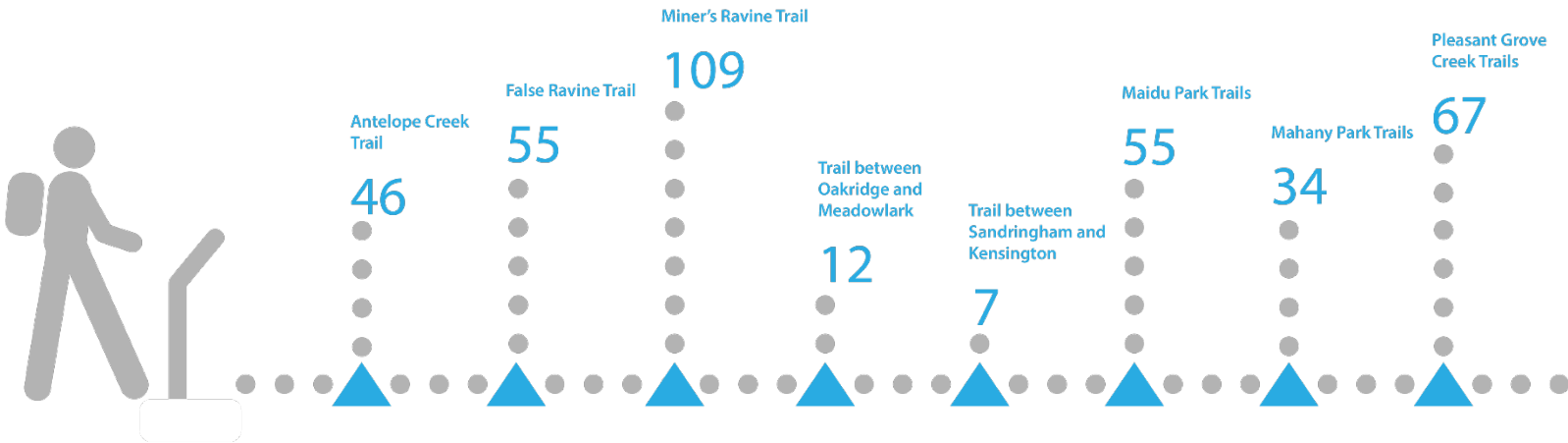
- Regional trail usage
- County trail usage
- Access to the potential Dry Creek West
- Trail amenities

Examples and maps were shown to help provide clarity on regional and county trail usage. Respondents were given multiple choice questions as well as open-ended questions. From the April 9 Community Open House, April 21 Earth Day pop-up event, and throughout the 2-week duration of the questionnaire being available online, the project team received 156 responses from community members.

Summary of Feedback

Below is a summary of feedback the project team received from all submitted questionnaires, organized by question.

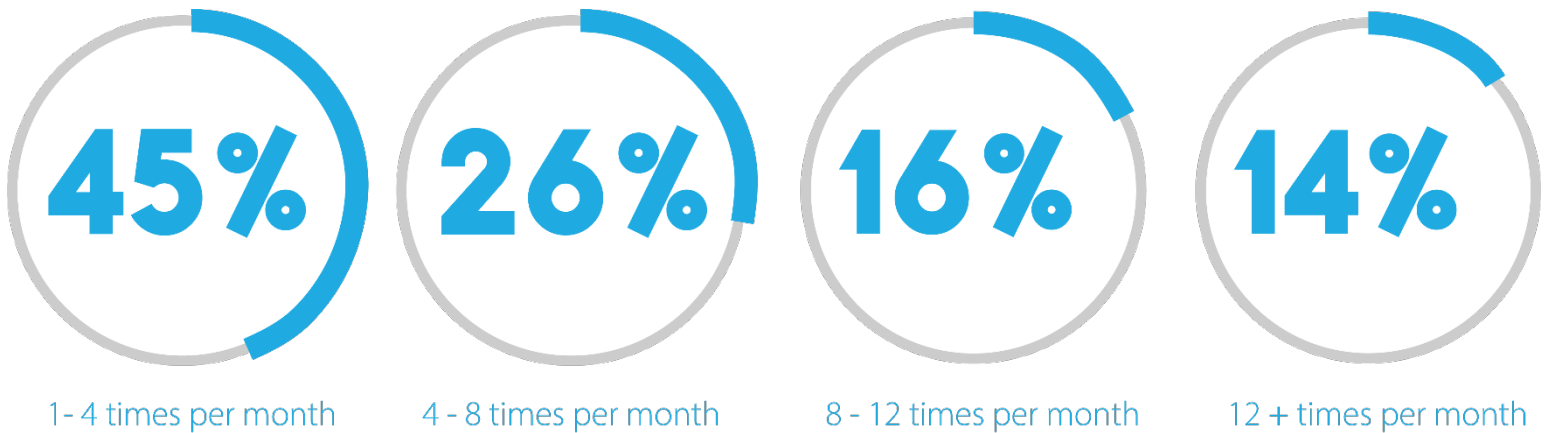
Question 1: Which paved trails do you use in Roseville? Choose all that apply.



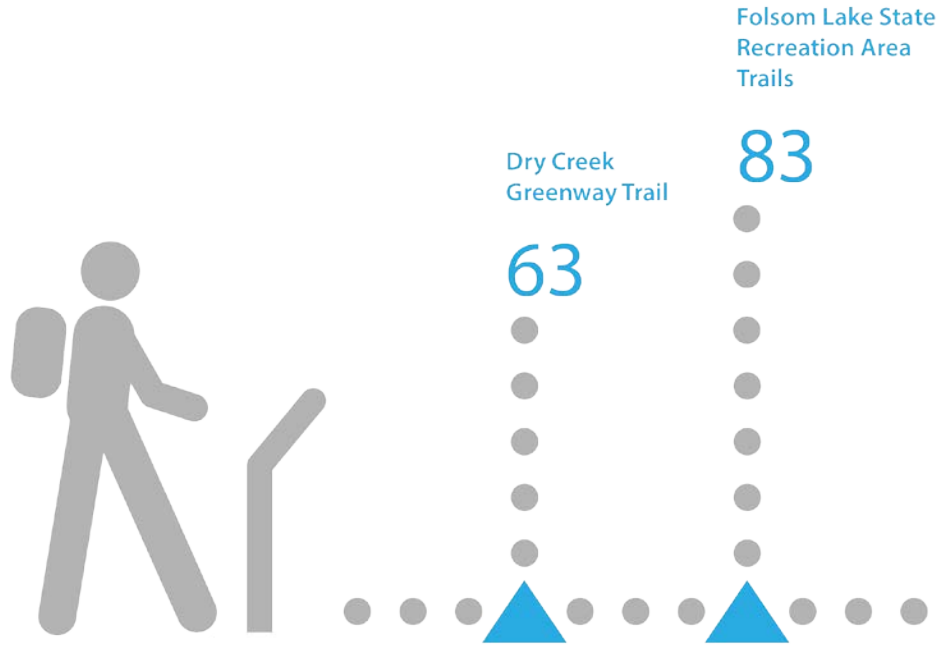
Other regional paved trails:

- American River Parkway
- Harding-Royer Trail
- West Park Trails
- Washington to Pleasant Grove – parallel to Roseville Parkway
- Saugstad Park Trails

Question 2: How often do you use these paved trails?



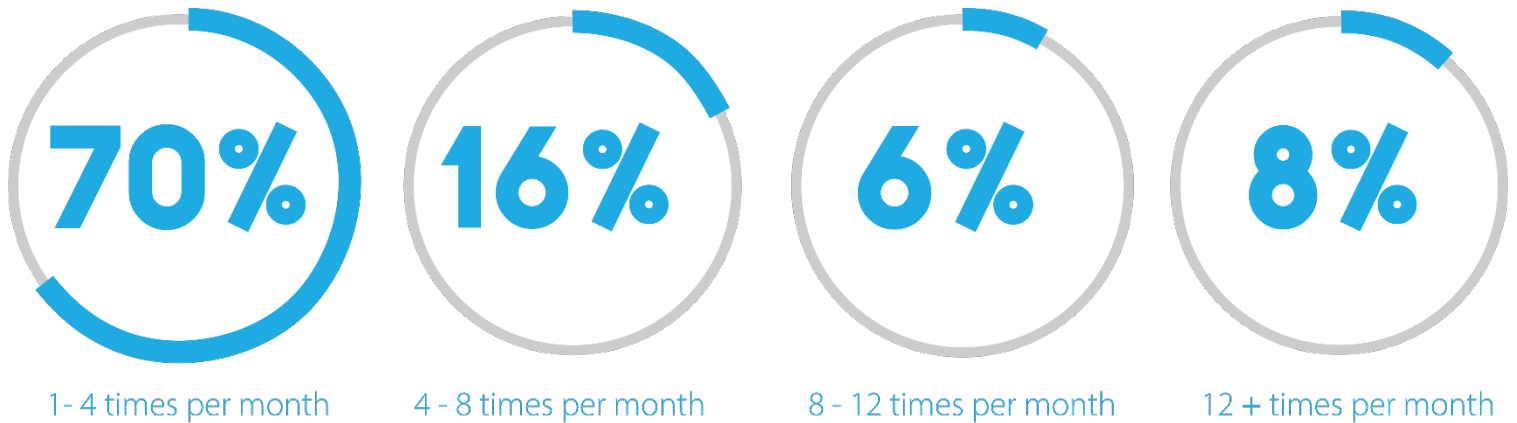
Question 3: Which regional paved trails in Placer County do you use?



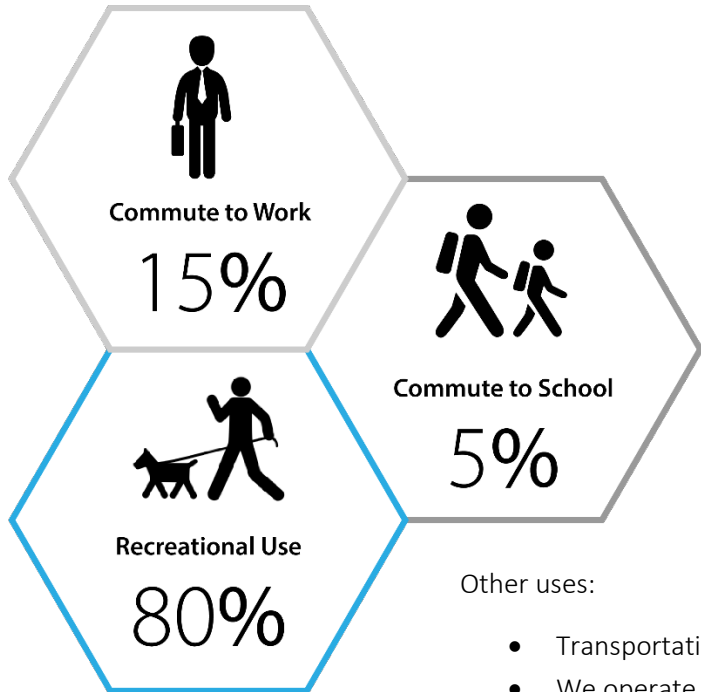
Other county paved trails:

- Olympus Pointe Sculpture Park
- American River Parkway

Question 4: How often do you use these paved trails?



Question 5: What do you use paved trails for?



Other uses:

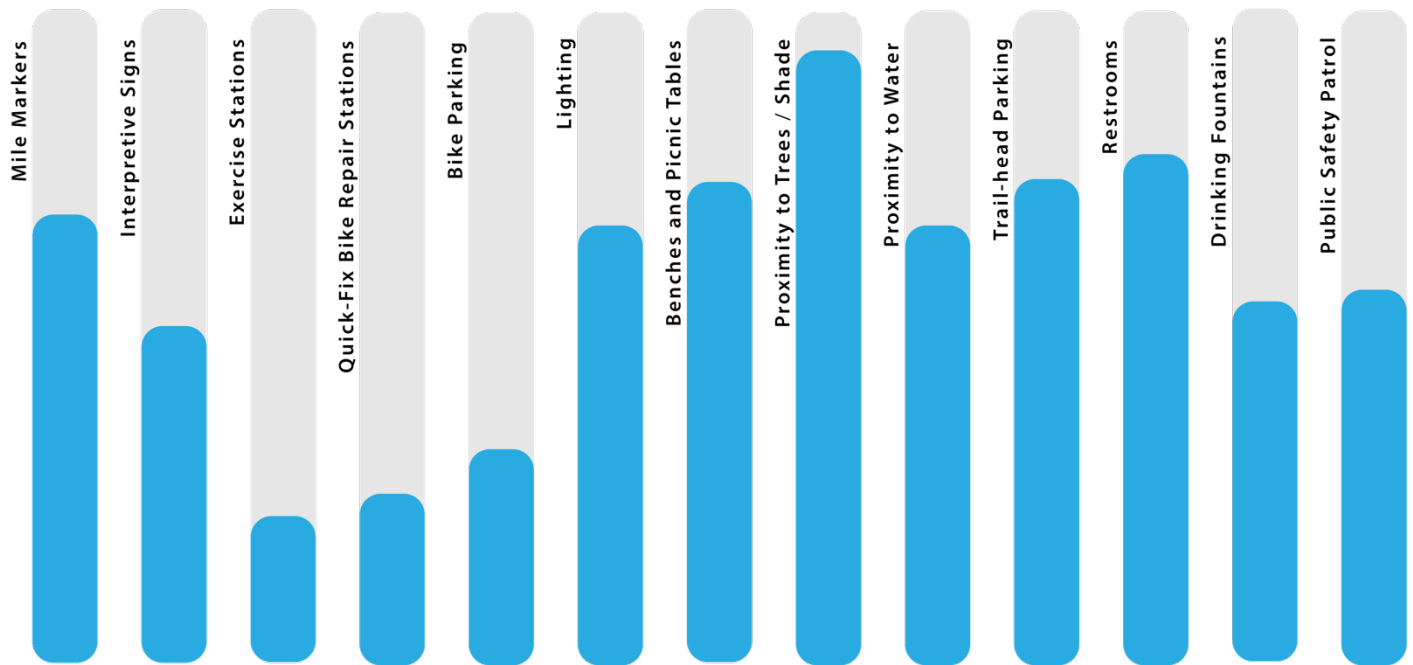
- Transportation to the dentist and Galleria
- We operate the BMX track on Riverside
- If the trails linked up to shopping areas, I would use them to run my errands

Question 6: If the Dry Creek Greenway West Trail was built, where would you most often access the trail?



1 The map above represents the streets where people would like to access the potential Dry Creek West Trail

Question 7: What amenities would encourage you to use the paved trail?



Other Amenities:

- Dog watering stations
- Dog waste bags & containers would be useful and help keep trail cleaner
- Trash cans, several along the trail
- Natural (dirt) trail along side of the pavement
- Signs with rules to enforce the flow of traffic
- Proximity to coffee shops or cafes
- Bathrooms near major trail starting areas – this adds to cost to have further safety measures/homeless patrol. Potentially design the trail with bathroom access at the parks.

Question 8: Additional Comments.

Amenities

- Provide dog-friendly trails.
- My husband and I love the trails and use them regularly to walk our dogs and ride our bikes. I especially have a difficult time continuing a ride or walk if I can't find a restroom, there are no construction outhouses to depend upon!
- I used to be in an organization that used the American River Parkway, which has water and restroom amenities.

- I probably would not use this trail, but I still think it should be built. Roseville needs more off-road trails that cyclists can use that are separated from roadways and cars.
- These trails are like the Cain's of the city, leading to the heart of downtown. Cyclists are good downtown Roseville shoppers. Could we get more places to lock up our bikes? How about discount to anyone who shops by bike with the downtown merchants?
- I like the mile markers on Miner's Ravine, if not actually on the trail, it could be nice to be able to look it up on the web site where we have the online trail map.
- We love Dry Creek trail between Walerga and Cook Riolo and would love to see it extended. We walk every day! More garbage cans are needed to help keep it clean
- No restrooms on the trail. They only draw the homeless to the area.

Access

- I love riding my bike on the trails rather than the busy streets like East Parkway, Douglas, and Harding.
- Bike access is needed under the tracks on Washington near Oak.
- Please build the Dry Creek connector to Riverside!
- Build more trails that are connected, and people will start biking more. Eventually we will run out of road space for automobiles, so we need to improve and build protected bike lanes and class 1 trails for commuting and exercise away from the bad/crazy/inattentive/aggressive Roseville drivers.
- I look forward to more cycling/walking trails in the area. Connecting trails are the best.
- I've been approached by many millennials on the Dry Creek trail asking about other trails. This would provide access to work, school and eateries in the downtown area which are presently a challenge to get to on a bike. The age and growth of the population in this area certainly needs a completed trail.
- Looking forward to the day when Pleasant Grove Creek Trail extends south from Woodcreek Oaks to connect with other Roseville trails.
- This would be a great extension of the trail I most often use, which starts at Walerga and ends at Cook Riolo!
- What's most needed is connectivity to all cycling trails in Roseville and Greater Sacramento so cyclists can safely bike throughout the region. Thank you!
- County, please complete the patchy trail system along Walerga Road to connect West Roseville to Dry Creek Greenway Trail. City, please extend Pleasant Grove Creek Trail to Corin Drive and Royal Gorge Loop in the west and to Rocklin's Lonetree Boulevard in the east.

Safety

- There are safety problems with the Oak trees being undermined by the water west of Riverside.
- Roseville has spent money on bike lanes, but drivers do not respect cyclist rights to the road. More trails are needed to ensure the safety of cyclists.
- Getting off the roads and away from traffic has always been my big concern with commuting by bike to work.
- I truly enjoy the trails in Roseville. My concern lies in the abuse of the trails from a camping perspective. It is not the camping that is annoying, but rather the mess that is created. I am disgusted by how much litter is left around.

- I enjoy running the Dry Creek trail and we also use it to walk/bike with our kids to get to the school and nearby park. It feels fairly safe now. If expanded I would want more safety incorporated. There are sometimes a lot of transients along the river.
- Putting in restrooms? That encourages people to hang about and discourages wildlife. It leads to the destruction of plants, garbage, homelessness, etc. Its a big fools idea.

Other

- Keep up the good work - this is what makes Roseville awesome!
- Roseville has great walking and biking trails! Many do not end or go by commercial / business areas.
- Looking forward to the new trail!
- This is a great chance to use trails as a family.
- Great new location!
- Would love to see an expansion of the Roseville trail system!
- Keep up the good work. Roseville trails paved and unpaved are a great asset to the community.
- Great trail system. I wish more were available in Placer County.
- We are very fortunate to have such beautiful landscapes around us. My family and many friends peruse the trails whenever we can and are thankful to have them. We have taken to not venture on them alone, though.
- Love these trails!
- Having the paved trails is the main thing I love about Roseville.
- How long will this process take?
- Very pleased with Placer counties effort to provide walking trails in natural environments.
- We enjoy many bike trails in this area. We avoid riding on city streets as much as possible!
- Big fan of this idea – please build!
- I want to thank all involved - this is very exciting! I think it will help sell Roseville as a great place to live for those considering it, and as such will be money well spent.
- I think this is a great project.
- We need more paved trails in Placer County for the safety of walkers and riders. This will help with tourism!
- I am not interested in the trail. Would not use it and wouldn't want to pay for it either.
- Please build the new proposed trails! I would use them a lot.
- I'm a city employee and would like to access the bike path for commuting. I would like to see the path on the same side of the creek where Hilltop Circle is located with a back gate for entering the Corporation Yard. It would be good for employees to use to enter the building.
- The Roseville trails are appreciated. I am happy to see that the City of Roseville is starting to expand their bike/multi-use trails, as the City of Folsom has done over the past few years.
- We like the rural feeling, let's not do too much to "city-fi" the area.
- I use the American River Parkway twice a week for running and /or bicycling. Would be nice to have the Roseville trail system connected and extended.
- I hope I live long enough to ride on a trail from Doyle Ranch park to Folsom Lake. Keep up the good work!!
- Pedals are becoming more popular and being used more and more as a transit alternative to cars. Hoping Roseville stays ahead of this shift.

Notification

Community members were notified through email, social media, and at the open house and pop-up workshop. Below is a graphic depicting how community members heard about the questionnaire.



Email

43%



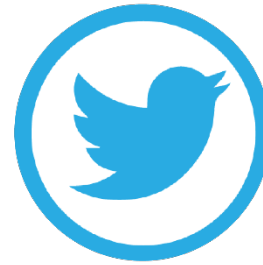
Earth Day Event

30%



Facebook

10%



Twitter

10%



Family / Friend

7%