

# Dry Creek Greenway **West** Planning and Feasibility Study

A MULTI-USE PAVED TRAIL ALONG DRY CREEK, FROM COOK RIOLO ROAD TO RIVERSIDE AVENUE

**Community Open House #1**

SUMMARY 4.20.2018

## Open House Summary

### Introduction

On Monday, April 9, 2018, in coordination with Placer County, Placer County Transportation Planning Agency (PCTPA), and the Rails-to-Trails Conservancy, the City of Roseville held a community open house for the Dry Creek Greenway West Planning and Feasibility Study. The open house was held from 6:00 – 8:00 p.m. at Cirby Elementary School in the multi-purpose room, located at 814 Darling Way, Roseville CA, 95678.

### Project Overview

The Dry Creek Greenway West Planning and Feasibility Study will evaluate the possibility of developing a 3-mile multi-use trail between Cook Riolo Road and Riverside Avenue, which would ultimately connect with the existing Dry Creek Greenway in unincorporated Placer County, west of Cook Riolo Road and the proposed Dry Creek Greenway East (Riverside Avenue to Old Auburn Road).



### Open House Purpose and Format

The community open house provided a project introduction to the Dry Creek Greenway West Planning and Feasibility Study. The meeting provided community members with an opportunity to learn about the study and share input on the trail concept and potential challenges and opportunities.

The meeting was held in an “open house” format, with five information stations set up around the room for attendees to review and provide input, with project team members stationed around the room to answer questions.

The open house objectives included the following:

- Provide an overview of the Dry Creek Greenway West Feasibility Study goals, objectives, and potential schedule
- Gather input on the trail concept and existing trail challenges and opportunities
- Gather community questions and concerns



## Stations

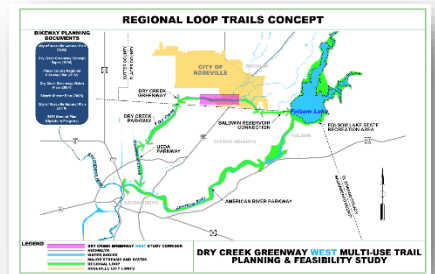
The open house consisted of the following staffed information stations:

### **Station 1: Regional Loop Trails Concept**

The objective of this station was to gather information about community members' current use of trails and inform the community about the comprehensive community benefits of paved trails. The station featured an overview of the City and County's vision for paved trails in the region.

#### Displays Included:

- Regional Loop Trails Concept
  - Map displaying the connections to the American River Parkway
- City of Roseville and Western Placer County Trails
  - Map showing trails in Roseville and Placer County, along with illustrative photos of community use of existing paved trails in Roseville and Placer County. The board also included the City and County trail cross section standards.



### **Station 2: Dry Creek Greenway West Overview**

The objective of this station was to inform the community about the Dry Creek Greenway West Planning and Feasibility Study. This station provided an overview of the Dry Creek Greenway West study corridor.

#### Displays included:

- Large study corridor map
- Photo board of illustrative photos

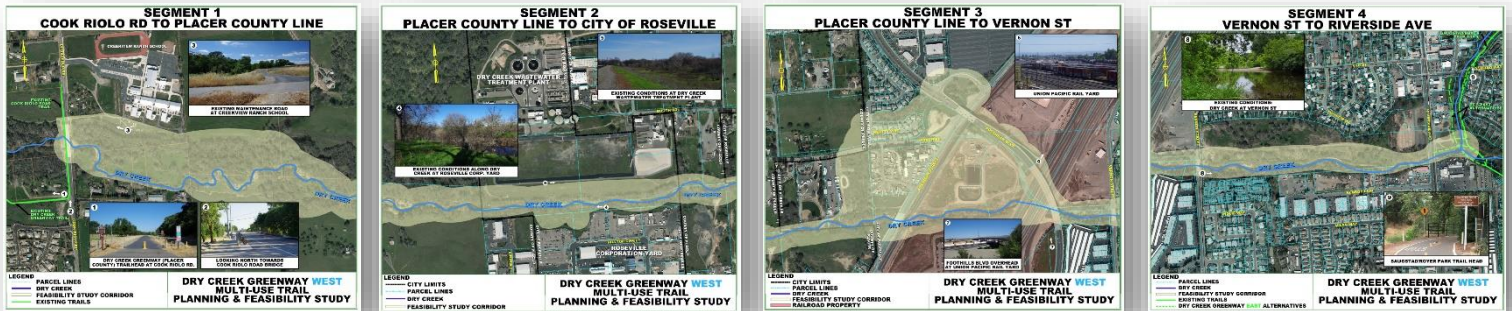


### Station 3: Trail Corridor Segments

The objective of this station was to familiarize community members with the connections of the different study corridor segments and identify the opportunities and constraints of each segment.

Displays included:

- Aerial Map of Trail Corridor Segment 1: Cook Riolo Road – Placer County Line
- Aerial Map of Trail Corridor Segment 2: Placer County Line – City of Roseville
- Aerial Map of Trail Corridor Segment 3: Placer County Line – Vernon Street
- Aerial Map of Trail Corridor Segment 4: Vernon Street – Riverside Avenue



### Station 4: Public Safety

The objective of this station was to inform community members about the public safety benefits of a formal trail along with safety options to consider with the trail. Roseville Police Department and Fire Department representatives were present at this station to discuss community concerns.

Display included:

- A board including illustrative photos depicting potential safety measures for the trail including privacy measures and trail crossings

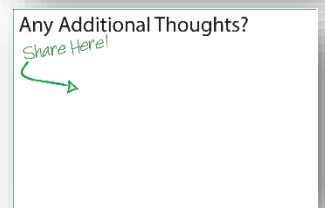
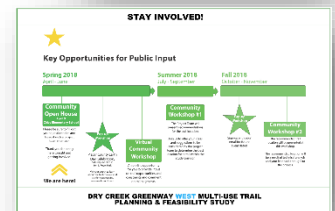
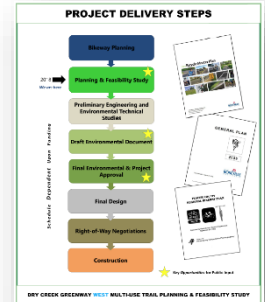


### Station 5: Stay Involved

The objective of this station was to inform community members about the project delivery steps to construction, outreach opportunities during the study and direct them to an online questionnaire. Along with displays, the station included printed questionnaires for community members to complete and return to the project team.

Displays included:

- Project Delivery Steps
- Public Outreach Timeline
  - Take-home fliers with questionnaire website address for community members to take home.
- “Additional Thoughts” Board
  - Blank board with a question prompting attendees to leave additional thoughts with post-its.



### Community Input

Below are the comments submitted by community members through the “Additional Thoughts” board and submitted questionnaires.

- We would move if the trail was built, our property is on Cook Riolo Road. We have five children and homeschool them. I am not always there to protect them. We cannot build a fence because Dry Creek floods every winter. How do we keep them and us safe? How do we stop people from scoping out our house to rob later? How will we be protected from increased fire danger? Please don't put this trail in our backyard!
- As home owners next to this proposed trail, we are concerned about additional homeless traffic and crime. We already see trespassers on our property on a regular basis and have noticed the trail between Walerga and Cook Riolo has increased people "exploring". We call the fire department when we see bonfires. In those areas, we find drug needles, alcohol containers, and crack pipes. We have called the police more times than I can remember. Our concern is also related to our small children and their safety.



- You should consider placing lighting at trail/road intersections and trail access points. Provide bike parking at all trail heads and access points and especially where motor vehicle parking is provided.
- I would love to be able to access bike/walking trails near my home rather than ride or drive to reach a trail. I would use it 3-4 times per week to walk my dogs or would even consider buying a bike again, so I could safely ride it.
- Some properties along the potential trail do not have gates, please include them so property owners can access the trail.
- Create grade separated street crossings wherever possible. Don't use bollards at access points. Strive to mimic the American River Parkway trail in width and having decomposed granite shoulders. Provide as much shade as possible and as many views of the creek as possible. Continue to promote regional loops.
- Command a reversing trail circulation policy to have all users on the right side of the trail, including walkers – no opposing circulation. Opening new trails will increase safety and reduce potential security and crime issues. There are many regional trail successes where local residents have increased property values.
- Linking together un-connected sections should be priority #1. As a trail runner and mountain biker, I also would love parallel single-track options, like the ones that exist along the current Dry Creek Trail.
- The existing trail from Cook Riolo to Walerga has a paved trail and a parallel dirt trail. I suggest the continuation of that concept, with a separate but parallel dirt trail in the corridor as far west as possible. This will provide a convenient way to train for high school mountain bike teams without having to take the kids and bikes up the hills and will provide a local outlet for all mountain bikers, so they don't have to drive to Tahoe.
- The box culvert under Riverside Avenue could also provide flood overflow capacity under Riverside Avenue. Old Subway Road gets a path under the railyards. Pay attention to sight distance along the path to ease conflicts between trail users.
- I use the American River Parkway and Folsom Trails twice a week. It will be nice once the Roseville trails are more connected. It will also be great when the SACOG planned loop is complete.
- Segment 3 is a challenge with the Railyards – do you have an alternate segment plan?
- Looking forward to being able to ride a majority of the Roseville-Sacramento-Folsom loop on bike trails.
- Don't let the "old people" derail the trail.



- By having a bike trail running between Riverside and lower Vernon, the City of Roseville would be able to: encourage outdoor recreation, monitor the homeless camping in the area, and protect the wildlife and nature by keeping the land a greenbelt.
- This is a very necessary transit option for Roseville, Placer, and the whole region. Getting people out of cars and in a [bike] saddle can make a huge difference in health and well-being, not only for those using the trail, but those that live along the roads and travel by car.
- No complaints about the existing trails. To gain connectivity will be wonderful. I've been frustrated that I couldn't safely take my daughter to preschool on the other side of I-80 without crossing at Cirby. I would also like connectivity with Folsom Lake. Safe bike routes under or over I-80 would be great!
- Consider an adopted mile stewardship program.

## Notification

A total of 50 community members signed-in to the community open house and 25 community members submitted written questionnaire responses. To promote the community open house, a direct mail piece was sent to over 2,000 residents near the study corridor. Email notifications were sent to the City of Roseville, Placer County, Placer County Transportation Planning Agency, and Rails-to-Trails distribution lists. Local news stations in the City of Roseville were also notified. The project team reached out to community-based organizations and local businesses to share the event through their social media, newsletters, and fliers.

The open house was promoted on the City of Roseville's website and social media (Facebook, NextDoor, Twitter, and Instagram). The following organizations shared the event through social media and/or newsletter:

- City of Roseville
- Placer County
- PCTPA
- Dry Creek School District
- Ladies of Roseville Walking and Running Club
- Lifetime Cycle
- Performance Bicycle
- Roseville Chamber of Commerce
- Roseville Trail-Bike Group
- SABA
- Roseville Hub Bike Shop

