



City of Roseville Police Department

2018 Annual Summary



Table of contents

Chief's Message.....	2
Mission Statement & Guiding Principals.....	3
Divisions of the Police Department.....	4
Police Beats & Neighborhood Associations.....	5
Budget Summary.....	6
Personnel Summary.....	7
UCR Crime Stats for 2018.....	8
2018 Workload.....	9
Patrol.....	9
Investigations.....	9
Animal Control.....	9
Social Services.....	9
Property, Evidence & CSI.....	9
Records.....	10
Traffic.....	10
Communications.....	10
Incidents Dispatched.....	10
Community Outreach.....	10
Use of Force & Citizen Complaint Reporting.....	11
Robbery & Burglary Arrests.....	11
2018 Accomplishments.....	12



Chief's Message

Chief James Maccoun

On behalf of the women and men of the Roseville Police Department, I present this annual summary for 2018. The intent of this document is to provide an overview of our organization. My most important message is that the City of Roseville remains a very safe community with high service levels. This summary will present some key pieces of information but is not intended to provide a comprehensive report for the year.

Hiring

During 2018 we worked diligently to hire quality employees who were selected for their commitment to our community priorities as well as their high-level of competency. This year we've hired 21 Sworn Officers and 5 Professional Staff who represent some of the best and brightest professionals from the region.

We continue to move forward with the tasks of recruiting committed candidates to hire, succession planning, and our continuing search for dedicated volunteers to serve the Department. We currently have a very low number of vacancies in the Sworn and Professional Staff ranks, however, retirements are expected on the horizon.

Crime statistics

Unfortunately, in the violent crime categories we had an increase in homicides, reported sex crimes, and the broad category known as armed robbery. These three types of crimes lead to an increase in our violent crime index. All of our 2018 homicides involved victims and suspects known to each other and all suspects are currently in custody.

The majority of our sex crimes involve persons known to each other. As the national conversation regarding sexual assault continues we have more victims coming forward to seek the help and justice they deserve.

In respect to our robbery statistics, a high percentage of these instances are connected to criminals attempting a theft from a retail establishment while using force or fear against a loss prevention agent. We believe that RPD can lower these robbery statistics by working with our partners in the retail industry and continuing to focus on known offenders.

On the positive side of these crime statistics, we've had a good reduction in many property crime categories and a lower property crime index. We appreciate the community taking steps toward increased security and awareness. Our officers continue to make record numbers of arrests and utilize real time crime analysis data.

The RPD Communications Center handles all calls for Police, Fire, and Emergency Medical Services and is able to answer 94% of all 9-1-1 calls within 7 seconds. The Patrol Division continues to respond to every call for service where our presence is requested and will only refer you to self-reporting as a customer convenience.

Community

We continue to enjoy a great relationship with the Roseville community. Please be mindful that social media platforms are no replacement for meeting your neighbors or the members of your police department. We strongly encourage you to follow us on our social media sites, but please remember, writing about your concerns on a social media platform does not take the place of reporting the issue to law enforcement.

I encourage you to get engaged with your neighbors through a Neighborhood Watch program or through your Neighborhood Association. Please continue to report suspicious activity and never hesitate to call our Department.

Thank you for your interest and continued support,

Mission Statement & Guiding Principals

The Roseville Police Department has an enduring commitment to improving the quality of life in our community.

We are dedicated to providing outstanding customer service. With public trust and support, we will reduce crime while ensuring safety and care for all.

Our Guiding Principals are:



Constitutional Policing

We protect the rights and dignity of all in keeping with the United States Constitution and all laws



Crime Reduction

We prevent crime and tenaciously pursue justice for victims



Community Care

We listen to the needs of our community, solve problems, and offer help when possible



Respect

We maintain respect for our agency through professionalism and ethics

Divisions of the Police Department

The Roseville Police Department is organized into three divisions, each are overseen by a captain.



Captain Troy Bergstrom

Operations Division

The Operations Division is responsible for providing the Department's frontline law enforcement services. This includes Patrol officers and community service officers, K-9 Unit, and the Special Operations Unit made up of the Roseville-Rocklin Regional SWAT team, Bomb Squad, and Critical Incident Negotiations Team.



Captain Marc Glynn

Services Division

The Services Division is responsible for the Department's investigative and community focused operations. Along with Investigations, the Division includes Traffic, Community Services, Social Services, as well as specialized units including Crime Suppression, Threat Assessment, and Animal Control.



Captain Josh Simon

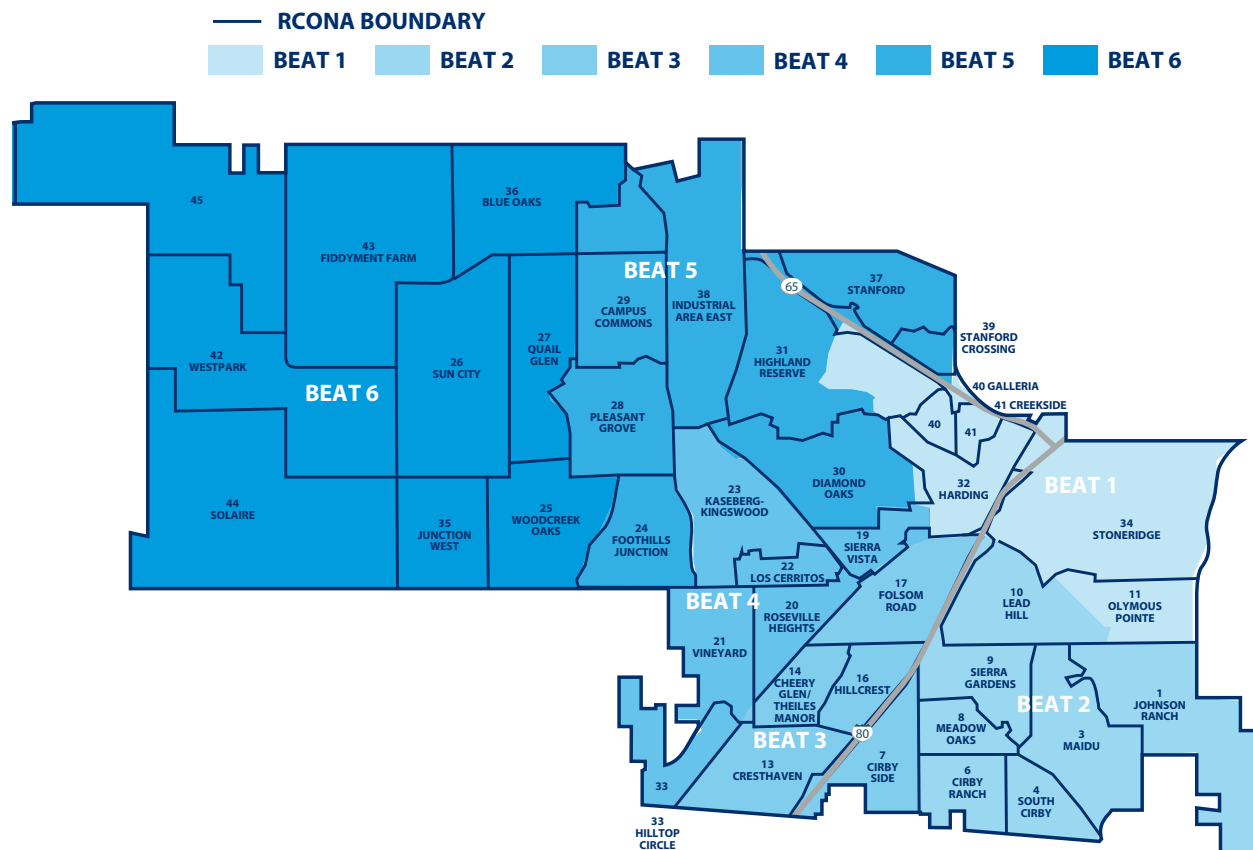
Support Division

The Support Division is responsible for many of the internal operations of the Department. These include Professional Standards, Records, Property & Evidence, Communications, as well as the Department Public Information program.

Police Beats & Neighborhood Associations

The City of Roseville is divided into six police beats. Within those six beats are 45 Neighborhood Associations that also act as police reporting districts.

A community organization called the Roseville Coalition of Neighborhood Associations or RCONA is comprised of representatives from each neighborhood. Neighborhood Officers are assigned to each neighborhood association with an effort to support Community Oriented Policing and Problem Solving (COPPS). Annually the Police Department partners with RCONA to support police community relations and events.

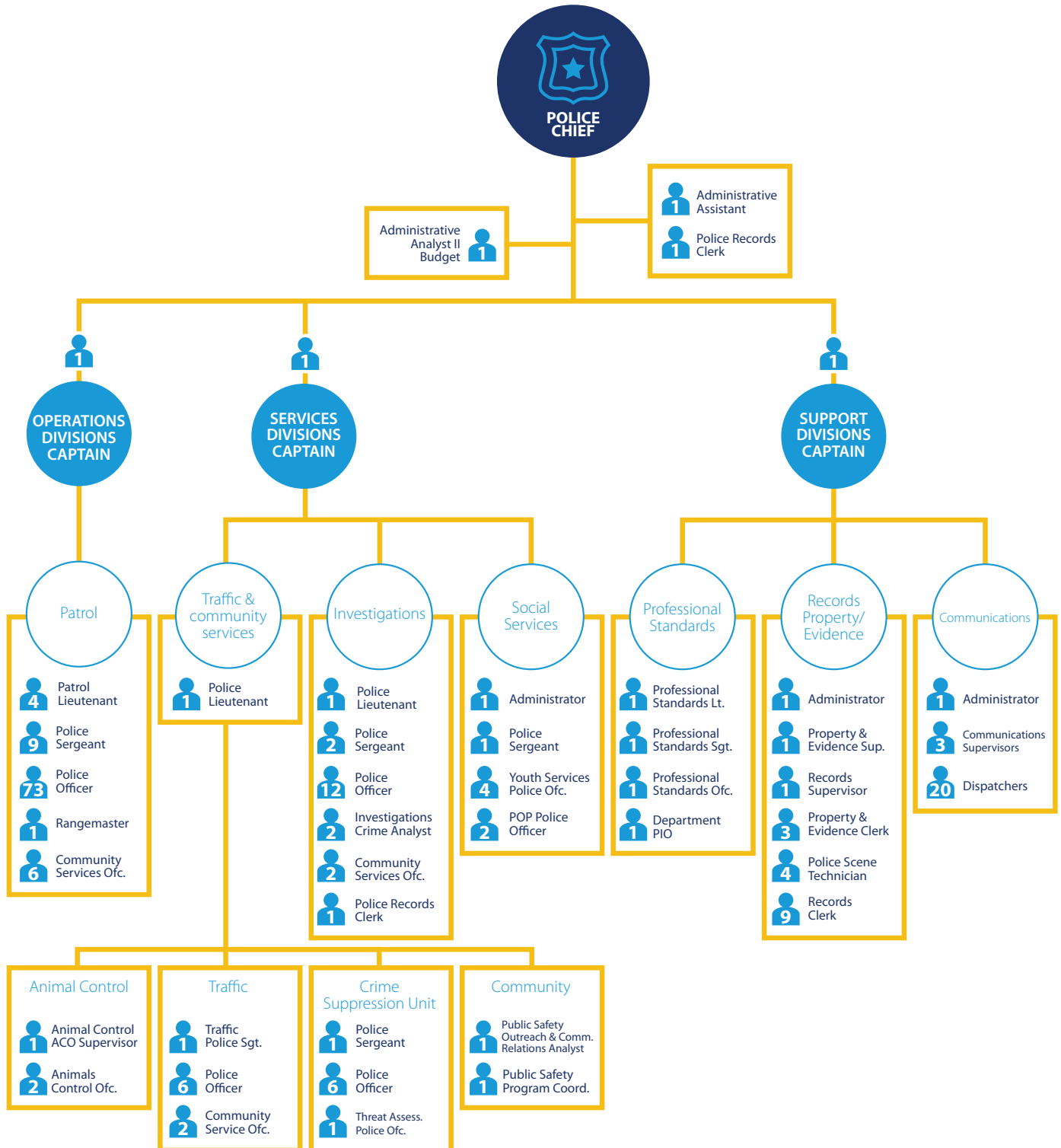


Budget Summary

The Fiscal Year 2017/18 approved budget for the Police Department totals \$39,570,603 million from all funding sources and supports 198 full time equivalent (FTE) positions (131 sworn and 67 professional).

POLICE DEPARTMENT	EXPENDITURES			
	2015-16 ACTUAL	2016-17 ACTUAL	2017-18 ACTUAL	2017-18 BUDGETED
ADMINISTRATION, SUPPORT & COMM SERVICES	9,703,005	10,410,719	13,632,747	12,071,342
POLICE OPERATIONS	23,763,922	24,188,896	25,039,772	26,362,238
ANIMAL CONTROL	1,091,315	1,133,071	1,168,875	1,137,023
REIMBURSED EXPENDITURES	(1,679)	(1,426)	(525)	(5,000)
TOTAL DEPARTMENT EXPENDITURES	34,556,563	35,731,260	39,840,869	39,565,603
RESOURCES	2015-16 ACTUAL	2016-17 ACTUAL	2017-18 ACTUAL	2017-18 BUDGETED
SALARIES, WAGES, BENEFITS	29,700,445	29,789,527	31,229,222	31,027,844
MATERIAL, SUPPLIES, SERVICES	4,846,797	5,937,159	8,551,362	8,495,976
CAPITAL OUTLAYS	11,000	6,000	60,810	46,783
REIMBURSED EXPENDITURES	(1,679)	(1,426)	(525)	(5,000)
TOTAL NET RESOURCES REQUIRED	34,556,563	35,731,260	39,840,869	39,565,603
HUMAN RESOURCES REQUIRED (Full-Time Equivalent)	196.50	197.50	196.50	196.50
FUNDING SUMMARY	2015-16 ACTUAL	2016-17 ACTUAL	2017-18 ACTUAL	2017-18 BUDGETED
REIMBURSED EXPENDITURES	1,679	1,426	525	5,000
NET GENERAL FUND	34,556,563	35,731,260	39,840,869	39,565,603
TOTAL DEPARTMENT FUNDING	34,558,242	35,732,686	39,841,394	39,570,603

Personnel Summary



UCR Crime Stats for 2018

2018 Part I Crimes

2018 PART I CRIMES	JAN	FEB	MAR	APR	MAY	JUN	JUL	AUG	SEP	OCT	NOV	DEC	TOTAL
HOMICIDE	2	0	0	0	0	0	0	0	1	0	0	0	3
RAPE	3	2	3	2	2	2	3	3	0	5	1	1	27
ROBBERY	14	8	11	10	8	8	11	10	20	10	14	7	131
AGGRAVATED ASSAULT	7	4	4	9	8	16	22	13	12	19	8	13	135
VIOLENT CRIME SUBTOTAL	26	14	18	21	18	26	36	26	33	34	23	21	296
BURGLARY	42	33	30	33	39	50	38	39	24	30	33	32	423
LARCENY	270	221	190	236	225	191	209	206	180	186	157	216	2487
MOTOR VEHICLE THEFT	20	24	28	24	21	27	26	21	17	16	26	25	275
ARSON	1	0	1	0	0	1	5	9	1	3	0	0	21
PROPERTY CRIME SUBTOTAL	333	278	249	293	285	269	278	275	222	235	216	273	3206
TOTAL	359	292	267	314	303	295	314	301	255	269	239	294	3502

2018 Part I Crimes

2018 PART I CRIMES	TOTAL	LAST YEAR TO DATE	RAW # CHANGE	% CHANGE	10-YR AVERAGE TO DATE (2008-2017)	% CHANGE
HOMICIDE	3	0	3	NC	1	200%
RAPE	27	26	1	4%	19	42%
ROBBERY	131	87	44	51%	76	72%
AGGRAVATED ASSAULT	135	124	11	9%	169	-20%
VIOLENT CRIME SUBTOTAL	296	237	59	25%	265	12%
BURGLARY	423	389	34	9%	495	-15%
LARCENY	2487	2615	-128	-5%	2717	-8%
MOTOR VEHICLE THEFT	275	310	-35	-11%	281	-2%
ARSON	21	33	-12	-36%	14	50%
PROPERTY CRIME SUBTOTAL	3206	3347	-141	-4%	3507	-9%
TOTAL	3502	3584	-82	-2%	3772	-7%

2018 Classification

2018 CLASSIFICATION	JAN	FEB	MAR	APR	MAY	JUN	JUL	AUG	SEP	OCT	NOV	DEC	TOTAL
BURGLARY - RESIDENTIAL	23	14	13	15	19	28	24	18	11	18	10	13	206
BURGLARY - NON-RESIDENTIAL	19	19	17	18	20	22	14	21	13	12	23	19	217
LARCENY - FROM AUTO	119	93	91	121	89	75	85	94	98	91	59	88	1103

2018 Classification

2018 CLASSIFICATION	TOTAL	LAST YEAR TO DATE	RAW # CHANGE	% CHANGE	10-YR AVERAGE TO DATE (2008-2017)	% CHANGE
BURGLARY - RESIDENTIAL	206	242	-36	-15%	306	-33%
BURGLARY - NON-RESIDENTIAL	217	149	68	46%	189	15%
LARCENY - FROM AUTO	1103	1084	19	2%	1151	-4%

2018 Workload



Patrol

- Police Incidents (Calls for Service with Personnel Response): 77,656
- Officer Initiated Incidents: 27,306
- Case Reports Written (Not Including Supplements): 11,652
- Arrests (Including Misdemeanor Citations): 4,267



Investigations

- New Cases Assigned (Assigned in 2018): 425
- Forensics Requests (Assigned in 2018): 260
- Cases Closed (Including Cases Assigned Prior to 2018): 473
- Cases Forwarded to the DA (Forwarded in 2018): 164
- Permits Processed: 281



Animal Control

- Animal Control Incidents (Calls for Service with ACO Response): 3,945
Numbers include ACO Units only
- Total ACO1 Calls for Service: 530
- Total ACO2 Calls for Service: 3415
- Animal Control Incidents (Calls for Service with Personnel Response): 5,066
Number includes All Units



Social Services

- Mental Health cases: 363
- Mobile Crisis Team calls for service: 178
- Social Services Disposition calls for service: 418
- Homelessness Disposition calls for service: 3624



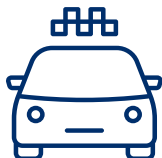
Property, Evidence & CSI

- Items received: 18,488
- Items purged or released: 16,070
- CSI criminal investigation calls: 979
- CSI DNA hits received: 40
- CSI Fingerprint hits received: 33



Records

- Reports (crime, services and accident) processed: 11642
- Juvenile Record Sealings: 209
- CLETS Stolen Property Entries: 899
- Automated Field Investigation/Contact reports: 435



Traffic

- Traffic collisions: 1672
- Traffic stops: 2369 (Traffic Unit only)
 - Total citations issued: 2047 (Traffic Unit only)
 - Total warnings issued: 322 (Traffic Unit only)
- Traffic services related calls: 163



Communications

- 911 Calls: 60, 575 (Includes 10,638 emergency 911 Abandoned)
- 7 Digit Emergency: 15,069
- Administrative Calls: 87,863
- Outgoing calls: 59,871
- Incoming Calls: 163,507
- Total outgoing and incoming telephone calls: 223, 378



Incidents Dispatched

Calls for Service Entered by Dispatch:

- Police Total Calls for Service (Includes Cancelled): 108,325
- Fire Total Calls for Service (Includes Cancelled): 19,338

Calls for Service Dispatched:

- Police Total Incidents (Calls for Service with Personnel Response): 77,719
- Fire Total Incidents (Calls for Service with Personnel Response): 17,048



Community Outreach

- Community events/meetings: 177
- Police Department tours: 13
- School outreach visits: 43
- Students reached: 5,025
- Community members reached: 54,046

Use of Force & Citizen Complaint Reporting

The Roseville Police Department must submit a use of force report of all instances when a peace officer employed by our Department is involved in an incident which involves serious injury or death.

For 2018, the following outlines the data the Roseville Police Department reported to the California Department of Justice in compliance with state law.

- An incident that involves the shooting of a civilian by a peace officer: **0**
- An incident that involves the shooting of a peace officer by a civilian: **0**
- An incident in which the use of force by a peace officer against a civilian results in serious bodily injury or death: **1**
- An incident in which use of force by a civilian against a peace officer results in serious bodily injury or death: **0**
- An incident in which a civilian files a complaint against a peace officer: **5**
 - Reported: **5**
 - Sustained: **1**
 - Exonerated: **3**
 - Pending: **1**
- An incident in which a civilian files a racial and/or identifying complaint against a peace officer: **0**

Robbery & Burglary Arrests

A deeper look at two major crime categories.

California robbery law, Penal Code 211, defines the crime of “robbery” as taking personal property from someone else’s person or immediate presence, against the victim’s will, through the use of force or fear. In Penal Code 459, California law defines “burglary” as entering any residential building, commercial building, retail establishment, room, or vehicle with the intent to commit a felony or a theft once inside. In Roseville, 39% of all “robbery” incidents were related to interactions between store loss prevention staff and suspects attempting to shoplift merchandise.

The following outlines the number of robbery and burglary arrests by the Roseville Police Department for 2017 and 2018 as well as the percentage of change:

Arrests	2017	2018	% Change
Robbery	46	71	54%
Burglary	307	321	5%

2018 Accomplishments

The Roseville Police Department had several notable accomplishments over 2018. With a focus on schools, training, technology, staff development, and Probation partnerships.

Schools

Increased “on duty” outreach by sworn and professional staff to our elementary and middle schools resulting 43 visits to schools and contact with 5,025 students.

Training

Implemented a California Peace Officers Standards and Training Commission certified eight-hour training course on “implicit bias and principled policing.” Every sworn officer completed this interactive and discussion-based training in an effort to ensure respectful and professional treatment during all public contacts. This training is based on national recommendations for best practices and we are one of few California agencies to have all sworn personnel complete the training.

Technology

Implemented seven major law enforcement technology upgrades or new systems: a P25 compliant public safety radio system, an electronic license plate reader system, mobile fingerprint ID devices for field identification, an FAA-certified unmanned aircraft system program, a department-wide electronic shift-scheduling system, GPS-based “bait” for detection and apprehension of property crimes, and a new system for the mobile electronic submission of booking reports to speed the process of booking inmates into the county jail.

Staff Development

Selected, promoted, and mentored three new police lieutenants of our seven lieutenant positions and five new police sergeants of our 16 sergeant positions. Tested hundreds of candidates, background-checked dozens, and hired 19 new police officers or police officer trainees.

Probation

Embedded five Placer County probation officers full time within the department in order to increase cooperation and enhanced supervision of the known offenders in our community. All Placer County probationers who reside in Roseville now receive their supervision, drug testing, and scheduled meetings at the Roseville Police Station. Roseville police officers regularly join probation officers on field contacts and probation searches.